



ARCHITECTURE

with sauce

Print out all parts and paint them in your favorite colors, before cutting them out.

Glue the page containing the building body onto a piece of thick paper.

Cut out all parts with scissors.

Use a ruler and a wooden stick to scratch the black dashed lines, this will make them fold easier.

Add all parts to the body step by step. The instructions on the next page will help you to do so. Afterwards, decorate your tower!



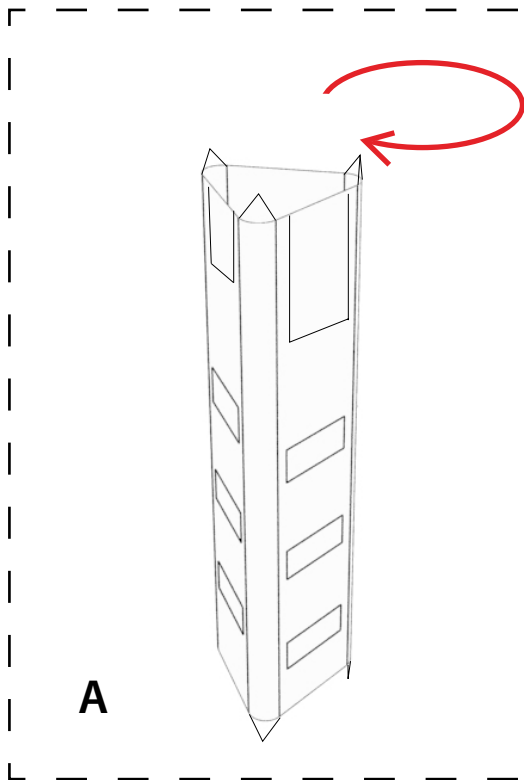
Commerzbank Tower

CRAFTING MODEL

JUNIOR VERSION
SIMPLIFIED

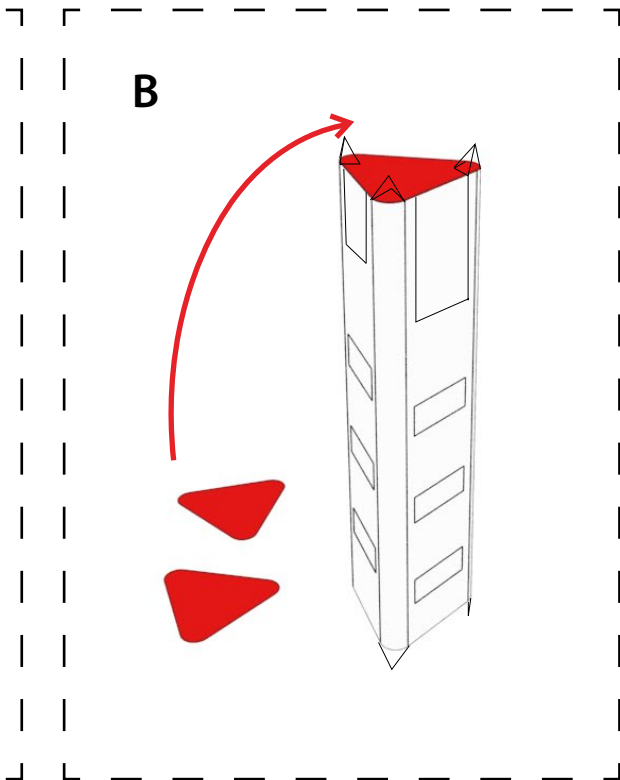
This crafting set was
made possible by:





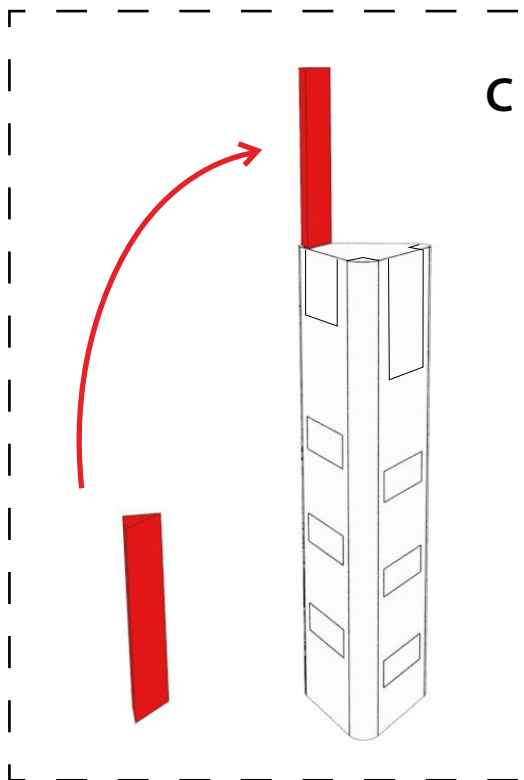
A

Start with the body.
Fold it and glue it
to make it uniform.



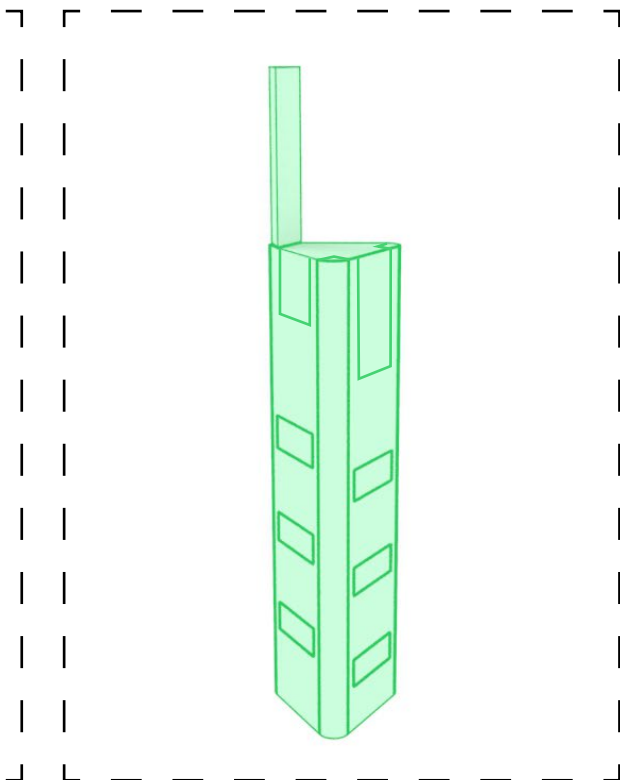
B

To close the body, use the
triangles and glue them
on the top and bottom.



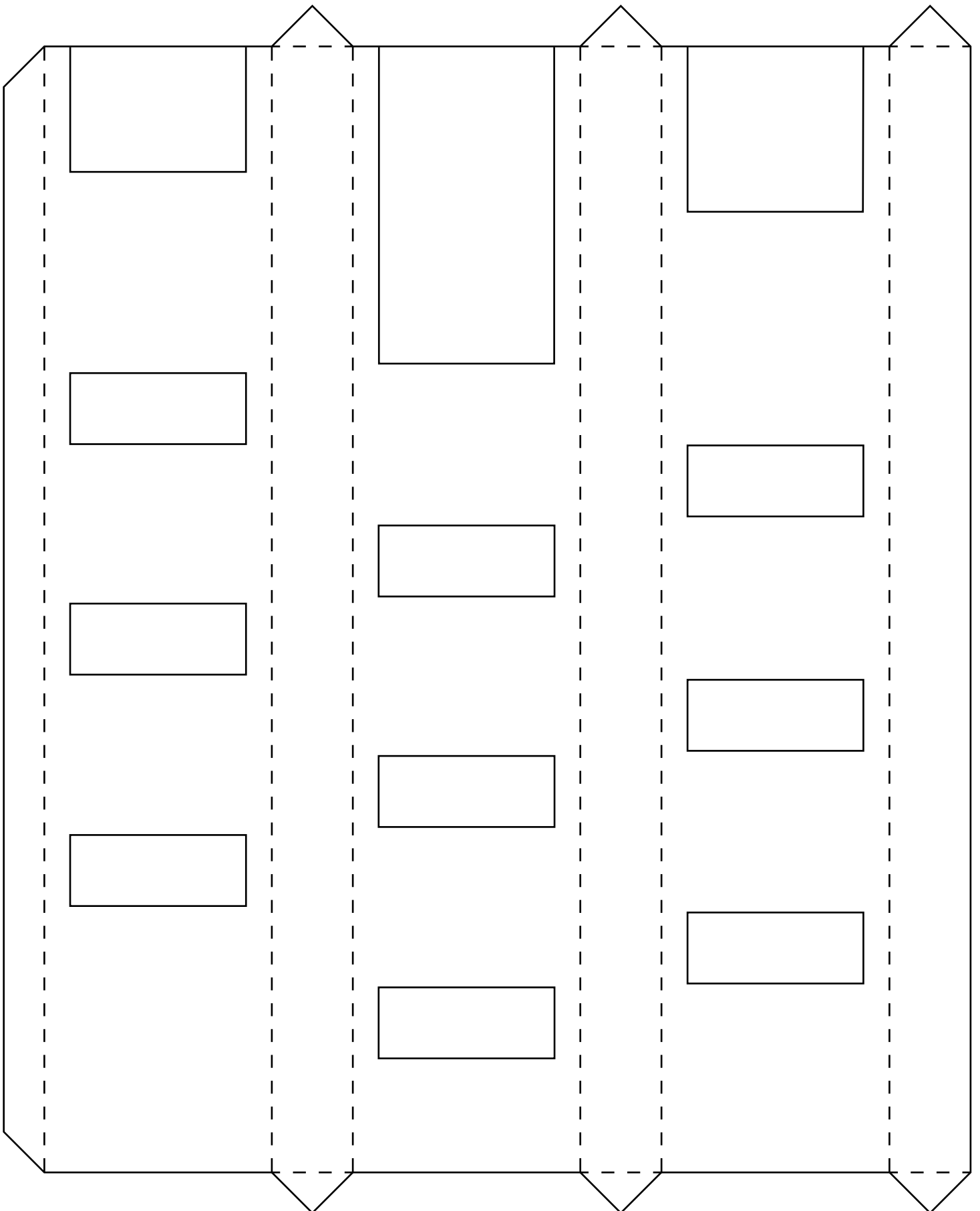
C

Finally, fold the
antenna and
glue it on top.

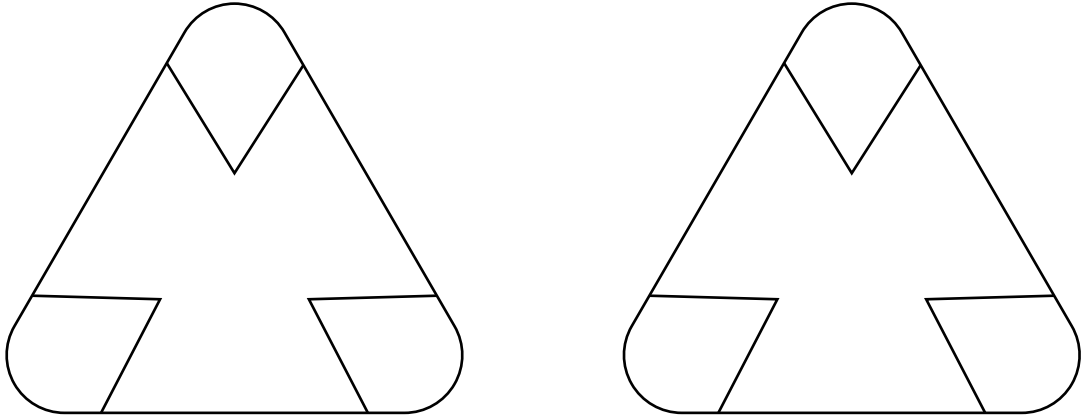


Congratulations, you did it!
To share your artwork with others,
please see the last page.

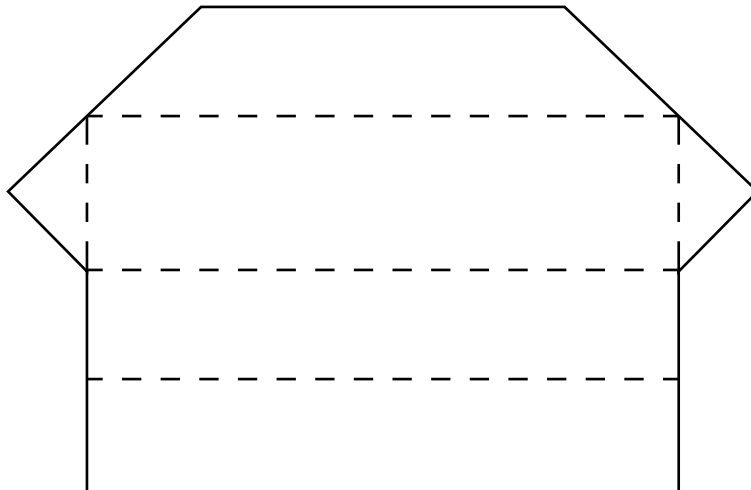
A (body)



B (body closure)



C (antenna)





ARCHITECTURE

with sauce

This tinker set has been provided by ARCHITECTURE with sauce, a project dedicated to offer crafting models.

Be sure to upload your building to the official gallery after you decorated it with colors or glitter: www.craftingmodels.com/upload/

You can share your artwork on social media using the tags #craftingmodel #frankfurt and #commerzbank.

Hungry for building more? You can download additional crafting sets directly online at www.craftingmodels.com



Commerzbank Tower

CRAFTING MODEL 1:1000

difficulty: easy 



To get more insights about the skyline of Frankfurt, its past and future developments, please visit us on www.skylineatlas.com - and follow us on social media.