



ARCHITECTURE

with sauce 

Print out all parts and paint them in your favorite colors, before cutting them out.

Glue body onto a cardboard which is not so thick (or use the back of a painting pad).

Cut out all parts with scissors.

Use a ruler and a wooden stick to scratch the black dashed lines, this will make them fold easier.

Add all parts to the bodies step by step. The instructions on the next page will help you to do so. Afterwards, decorate everything!



European Central Bank

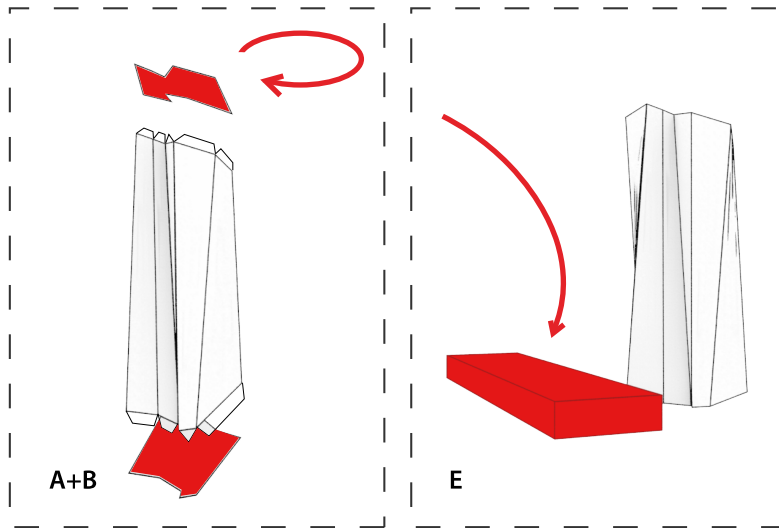
CRAFTING MODEL

JUNIOR VERSION

SIMPLIFIED

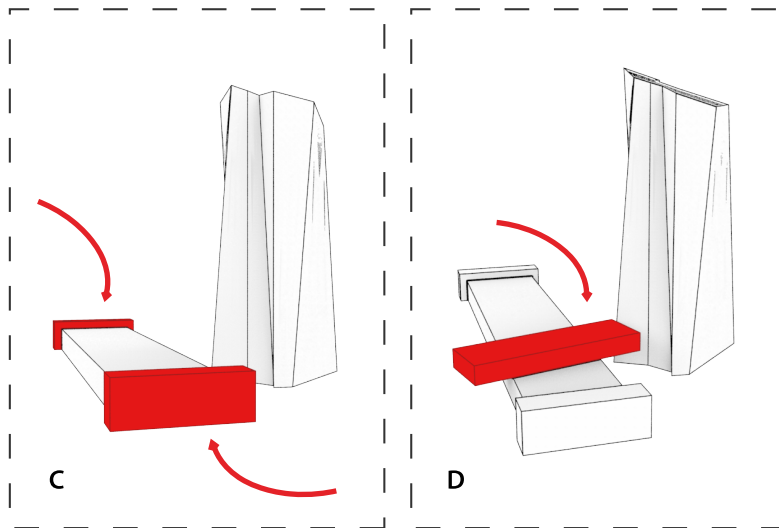
This crafting set was
made possible by:





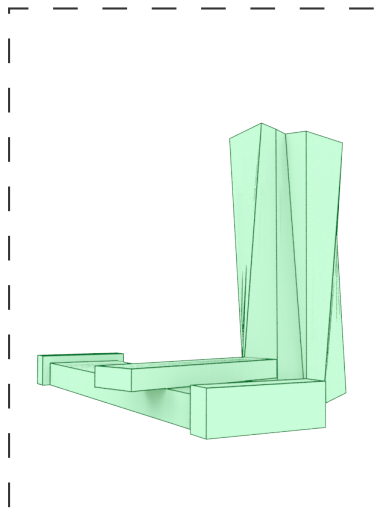
A+B
Start with the skyscraper.
Fold it and glue its roof and
its base to the body.

E
Build the Grossmarkthalle
and place it next to the
skyscraper.



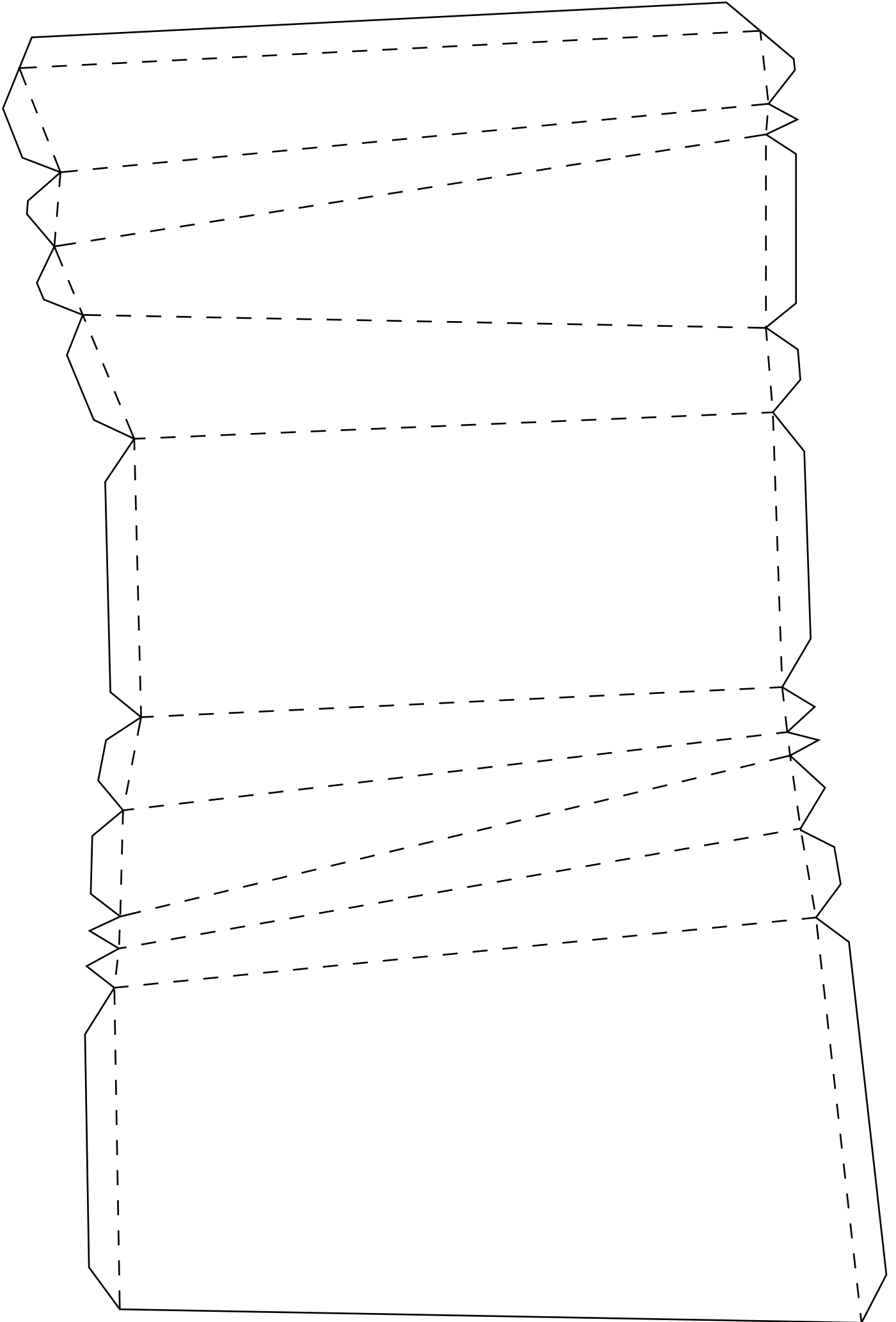
C
Add the side buildings to
Grossmarkthalle and
glue them.

D
Then you have to compose the
entrance building and stick
it to the top of Grossmarkthalle.

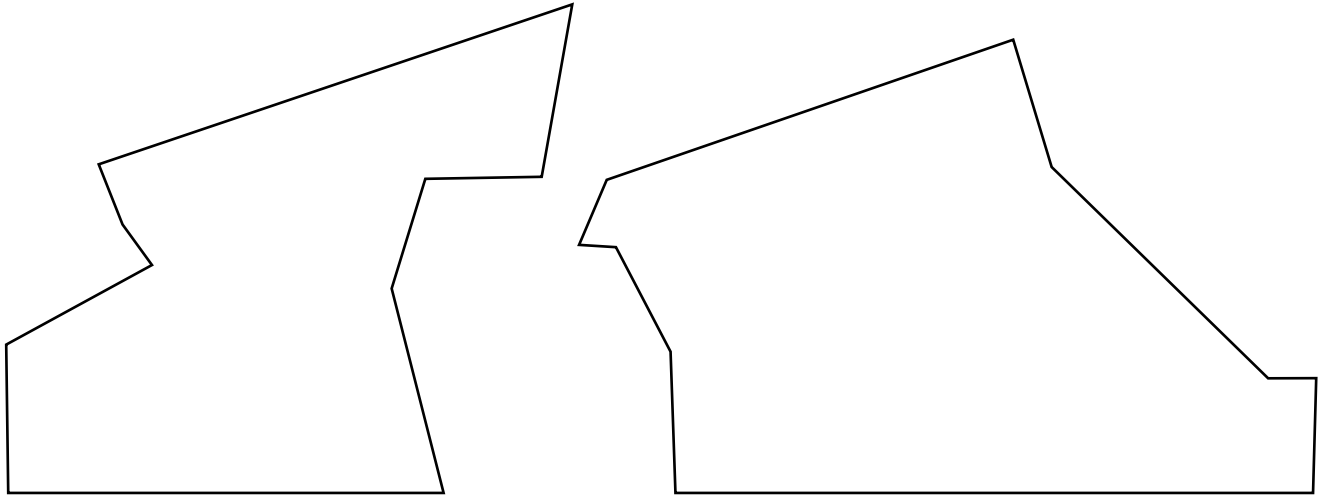


Congratulations, you did it!
To share your artwork with others,
please see the last page.

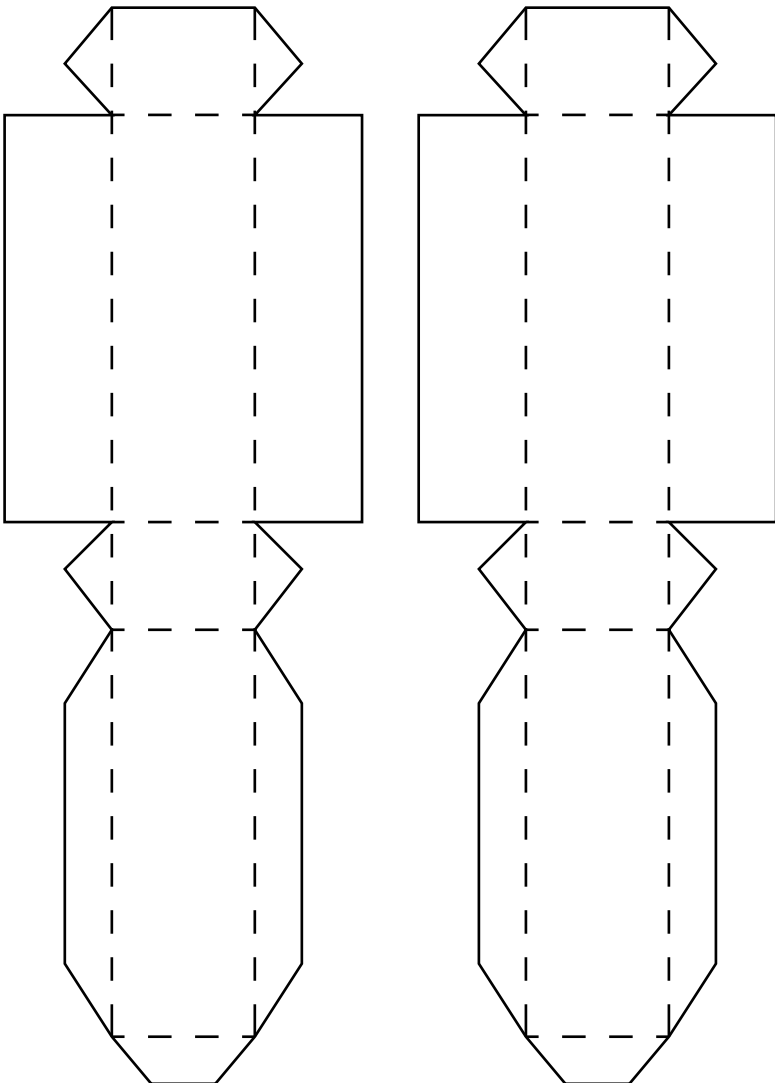
A (Skytower)



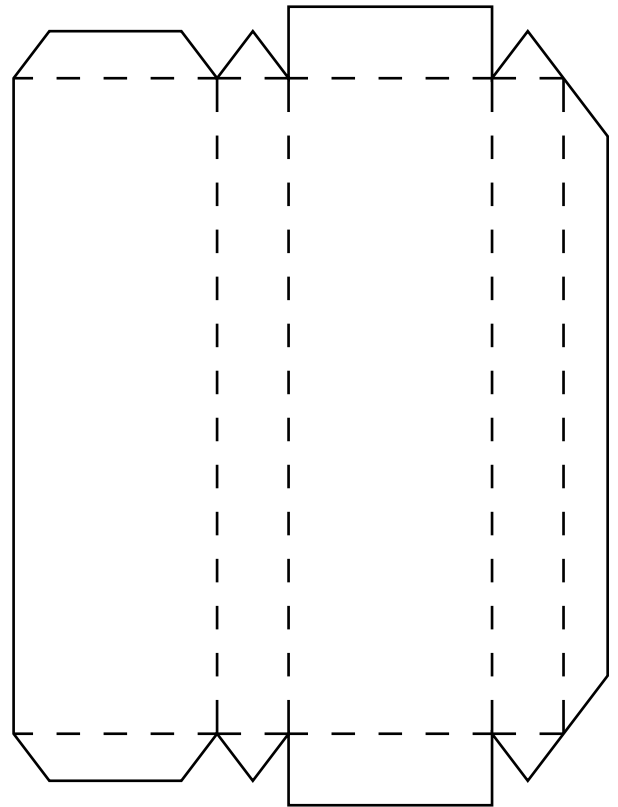
B (Skytower base and top)



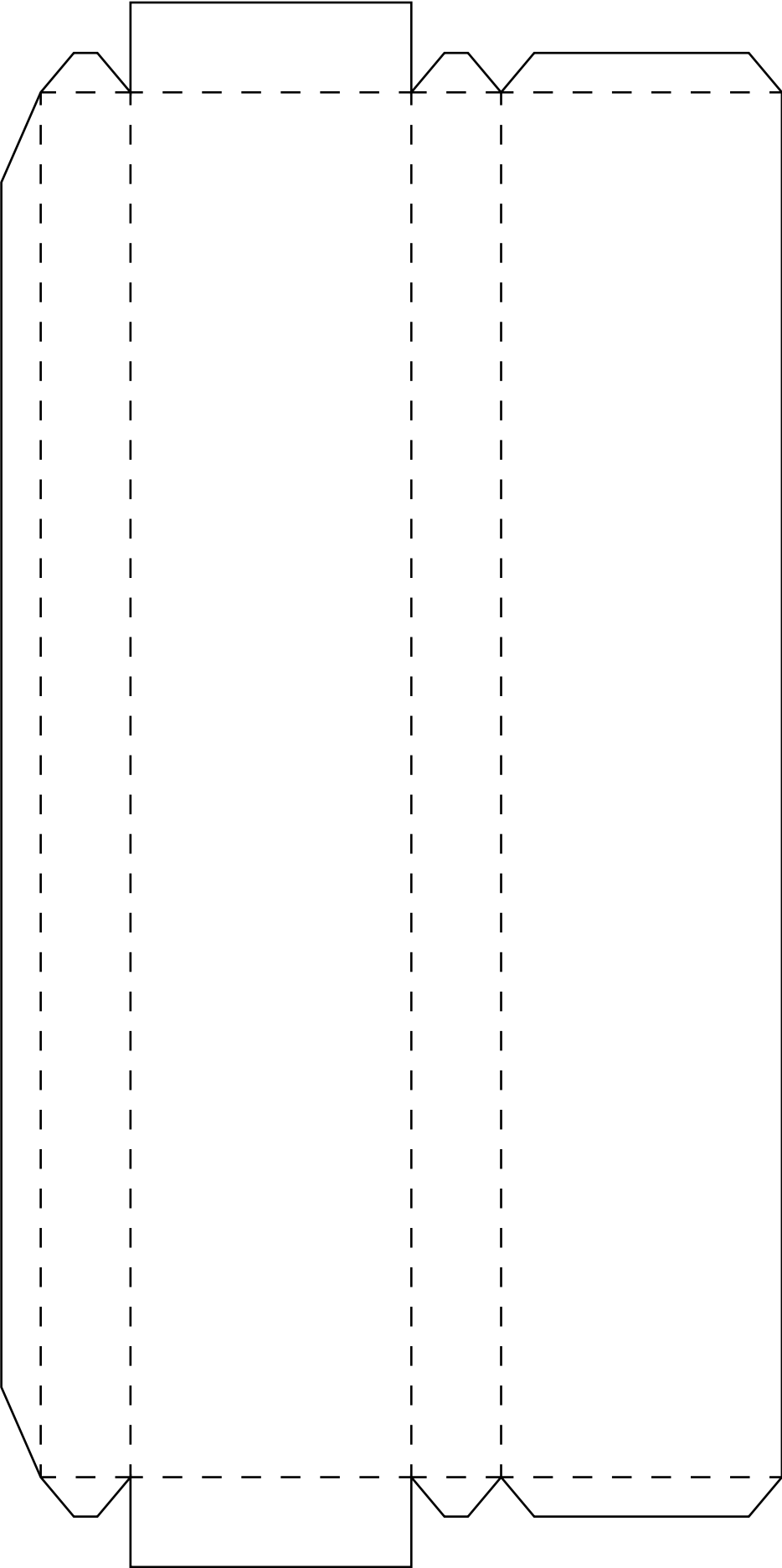
C (side buildings)



D (entrance building)



E (Grossmarkthalle)





ARCHITECTURE

with sauce

This tinker set has been provided by ARCHITECTURE with sauce, a project dedicated to offer crafting models.

Be sure to upload your building to the official gallery after you decorated it with colors or glitter: www.craftingmodels.com/upload/

You can share your artwork on social media using the tags #craftingmodel #frankfurt and #ecb.

Hungry for building more? You can download additional crafting sets directly online at www.craftingmodels.com



European Central Bank

CRAFTING MODEL 1:1000

difficulty: medium 



To get more insights about the skyline of Frankfurt, its past and future developments, please visit us on www.skylineatlas.com - and follow us on social media.