



ARCHITECTURE

with sauce

Print out all parts and paint them in your favorite colors, before cutting them out.

Glue the page containing the building body onto a piece of thick paper.

Cut out all parts with scissors.

Use a ruler and a wooden stick to scratch the black dashed lines, this will make them fold easier.

Add all parts to the body step by step. The instructions on the next page will help you to do so. Afterwards, decorate your tower!



MAIN TOWER

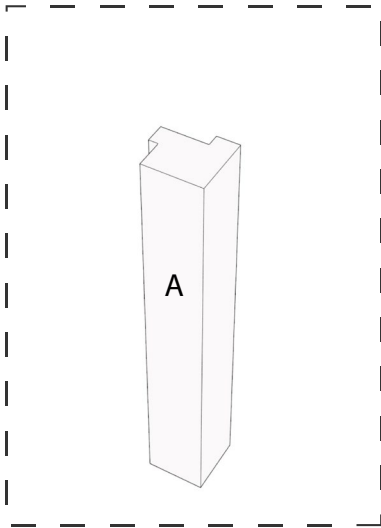
CRAFTING MODEL

PRO VERSION

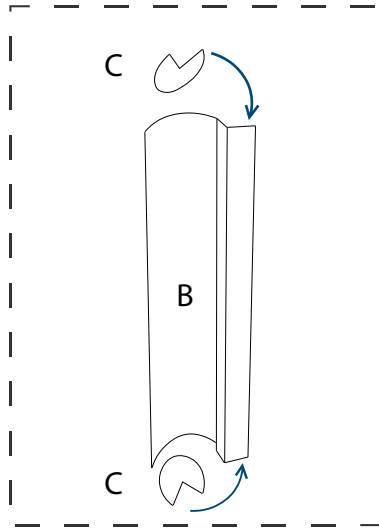
DETAILED

M A I N T O W E R

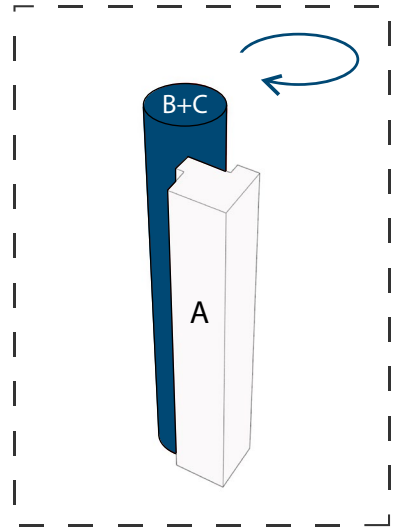




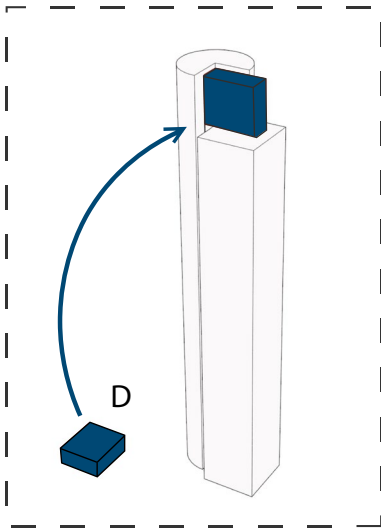
Start with the rectangular body. Fold it and glue it to make it uniform.



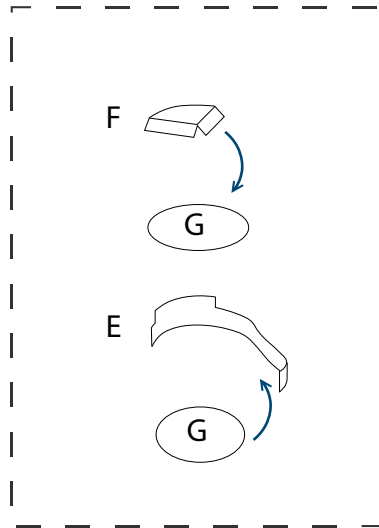
Fold the circular body, roll it 360 degrees, and glue the end of it.



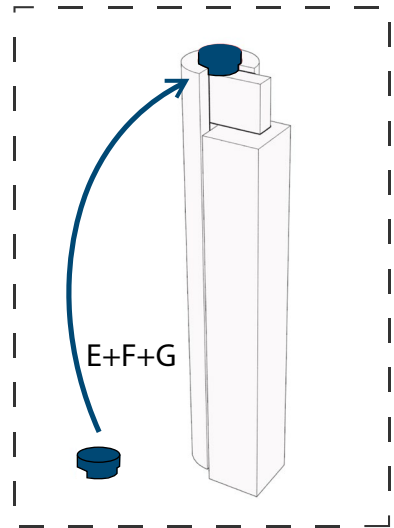
Now glue the two joined pieces to the rectangular body.



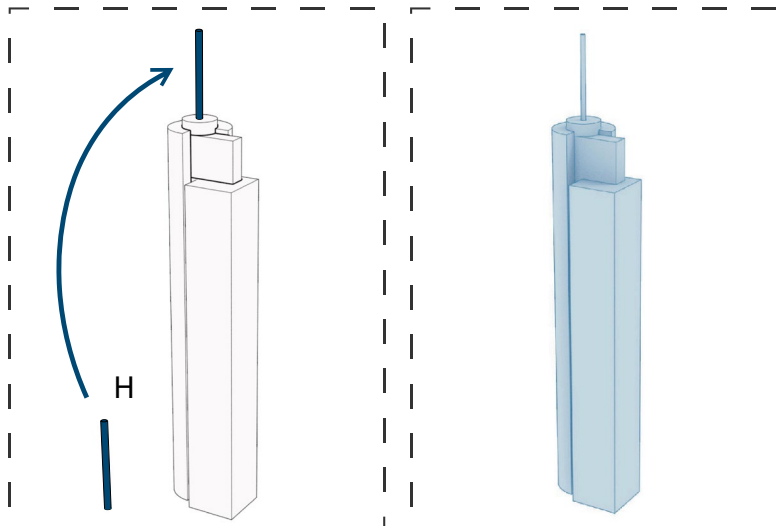
Fold the top joint and glue it between the two bodies.



Roll the base part 360 degrees and glue the cover tops on top of it.



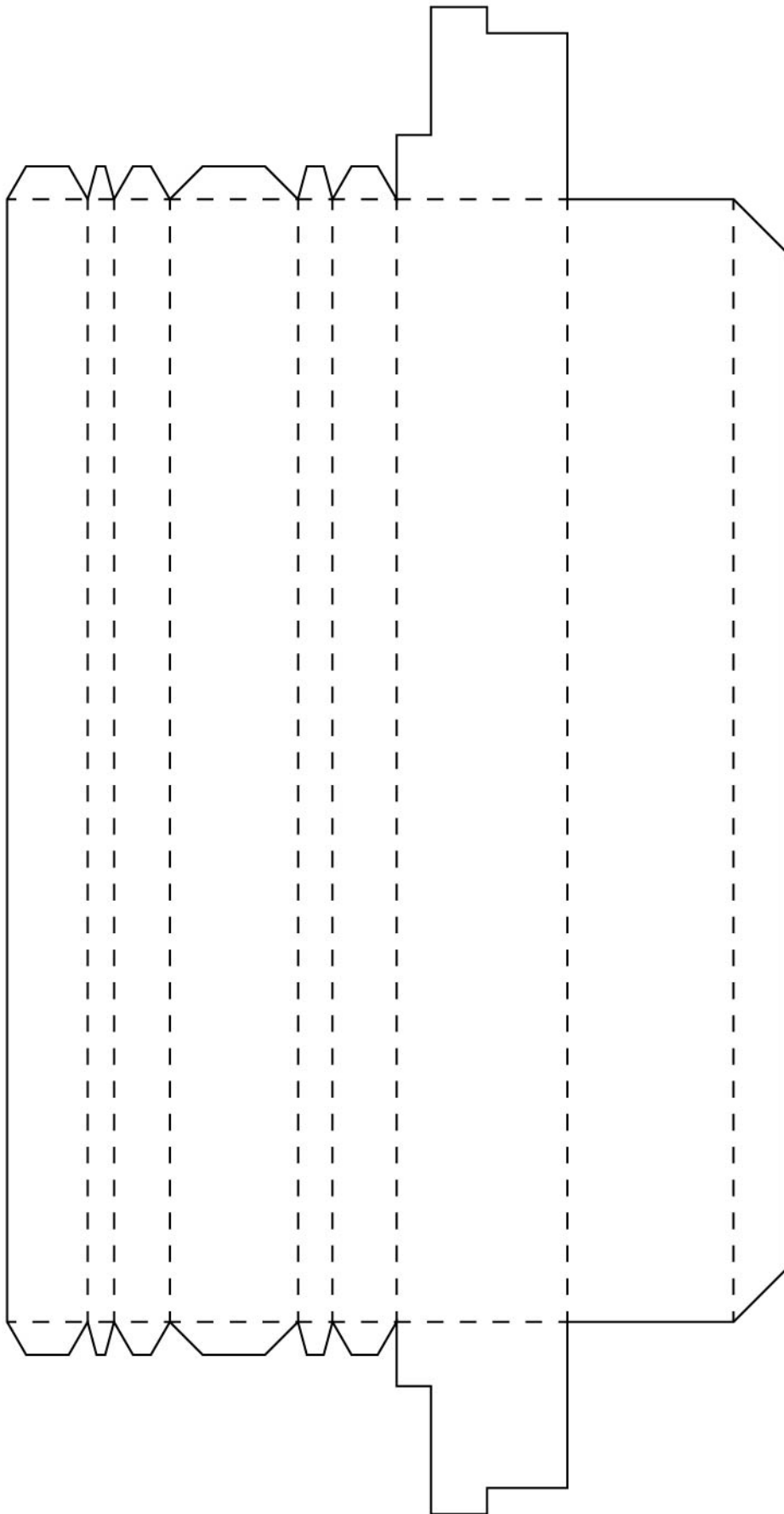
Glue the visitor platform to the top of the building.



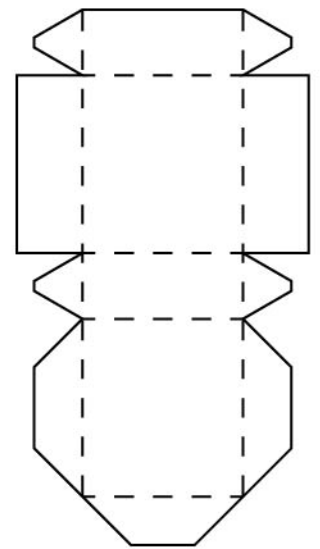
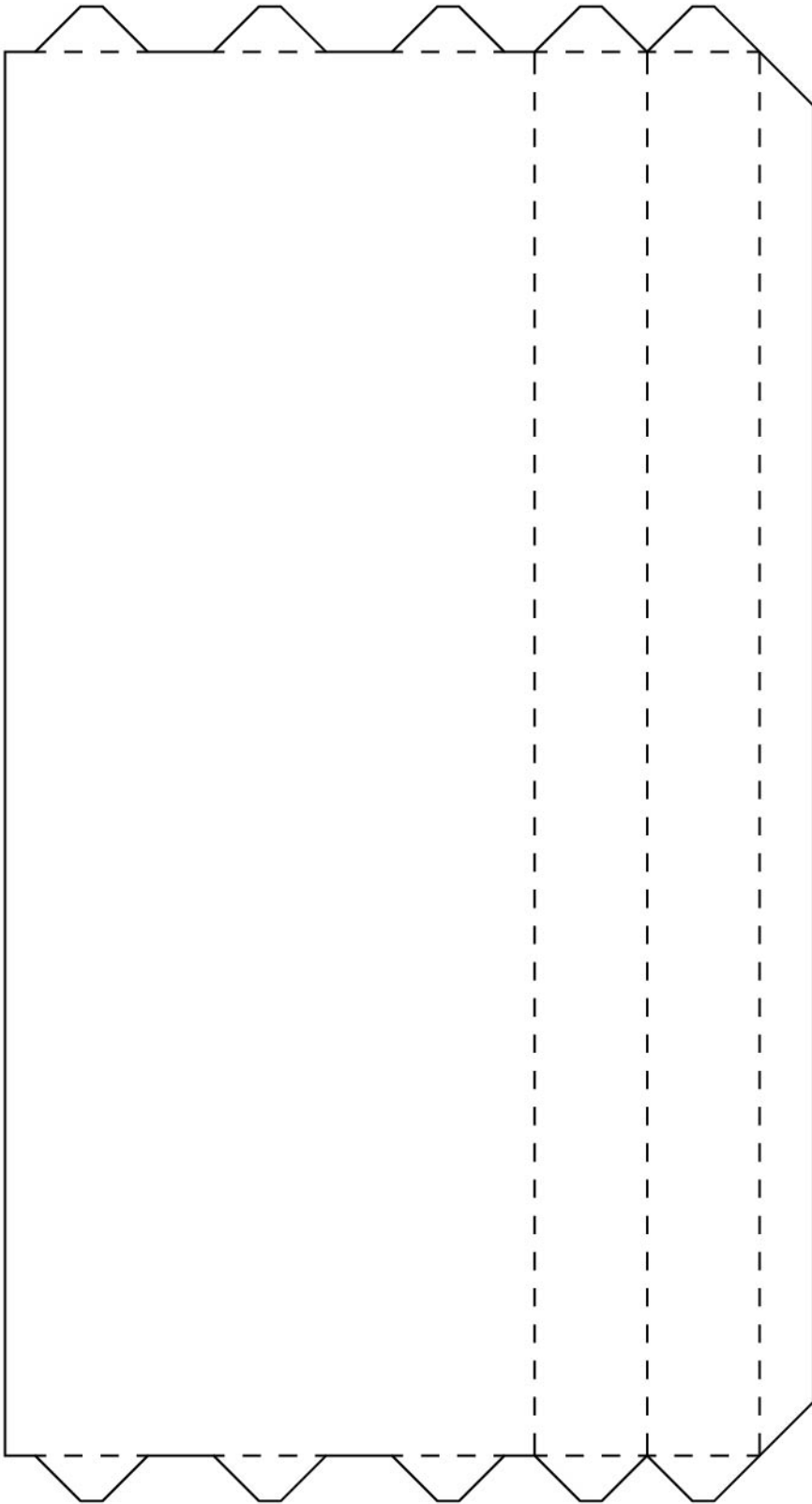
Finally, fold the antenna and glue it on the center of the cylinder.

Congratulations, you did it!
To share your artwork with others,
please see the last page.

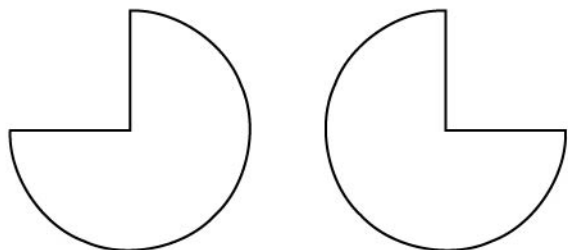
A (rectangular body)



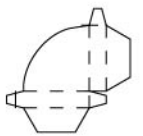
B (circular body)



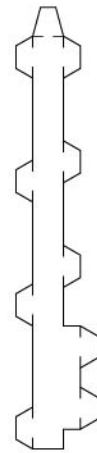
D (top joint)



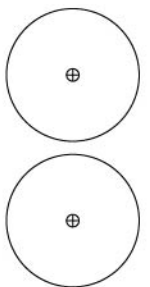
C (cover)



F (cover)



E (base)



G (cover)



H (antenna tip)



ARCHITECTURE *with sauce*

This tinker set has been provided by ARCHITECTURE with sauce, a project dedicated to offer crafting models.

Be sure to upload your building to the official gallery after you decorated it with colors or glitter: www.craftingmodels.com/upload/

You can share your artwork on social media using the tags #craftingmodel #frankfurt and #maintower.

Hungry for building more? You can download additional crafting sets directly online at www.craftingmodels.com



MAIN TOWER

CRAFTING MODEL 1:1000

difficulty: hard ★★★★★

M A I N T O W E R

