



ARCHITECTURE

with sauce 

Print out all parts and paint them in your favorite colors, before cutting them out.

Glue the page containing the building body onto a piece of thick paper.

Cut out all parts with scissors.

Use a ruler and a wooden stick to scratch the black dashed lines, this will make them fold easier.

Add all parts to the body step by step. The instructions on the next page will help you to do so. Afterwards, decorate your tower!



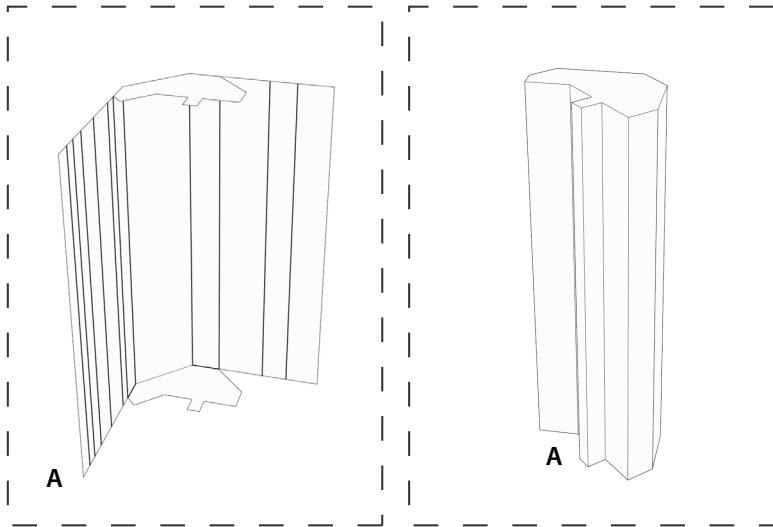
Deutsche Bank Headquarters

CRAFTING MODEL

JUNIOR VERSION
SIMPLIFIED

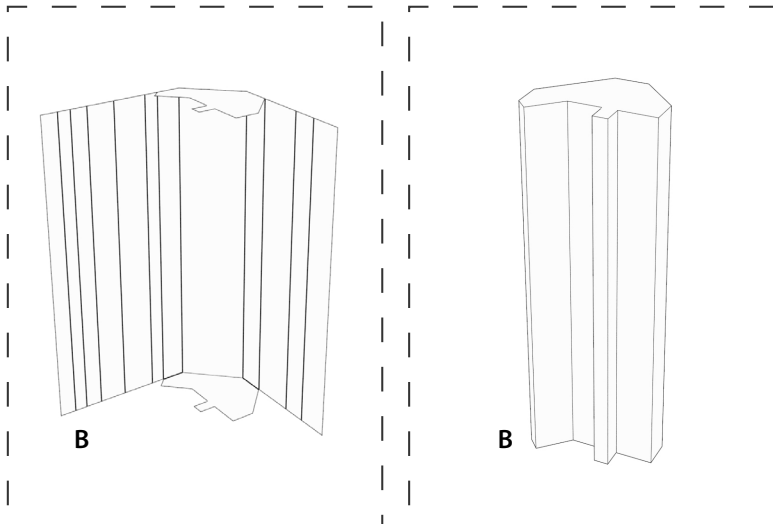
This crafting set was
made possible by:





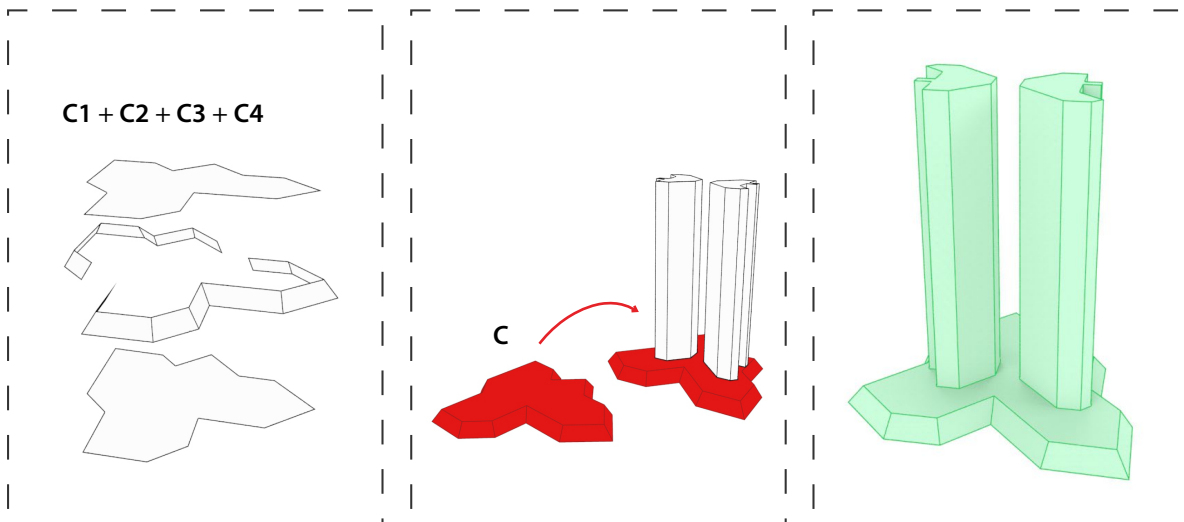
Start with the main body.
Fold it and glue it
to make it uniform.

Glue its bottom and top
parts so that it will be
completely closed.



Then, repeat the process with
the twin body. Fold it and glue it
to make it uniform.

Now, you will have
the same body that
you prepared before.



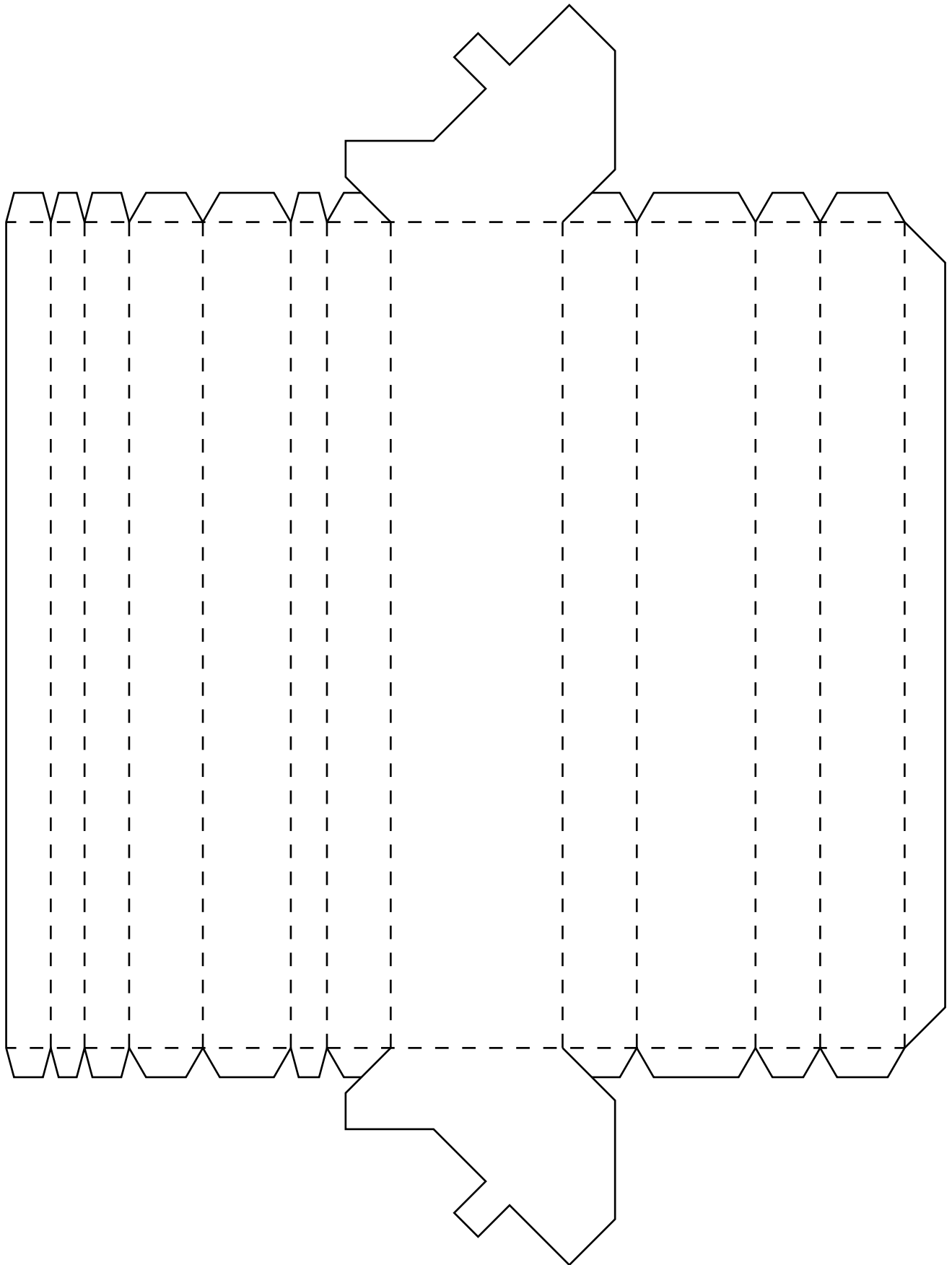
C1 + C2 + C3 + C4

Now, you add the
parts of the base plate
together into one piece.

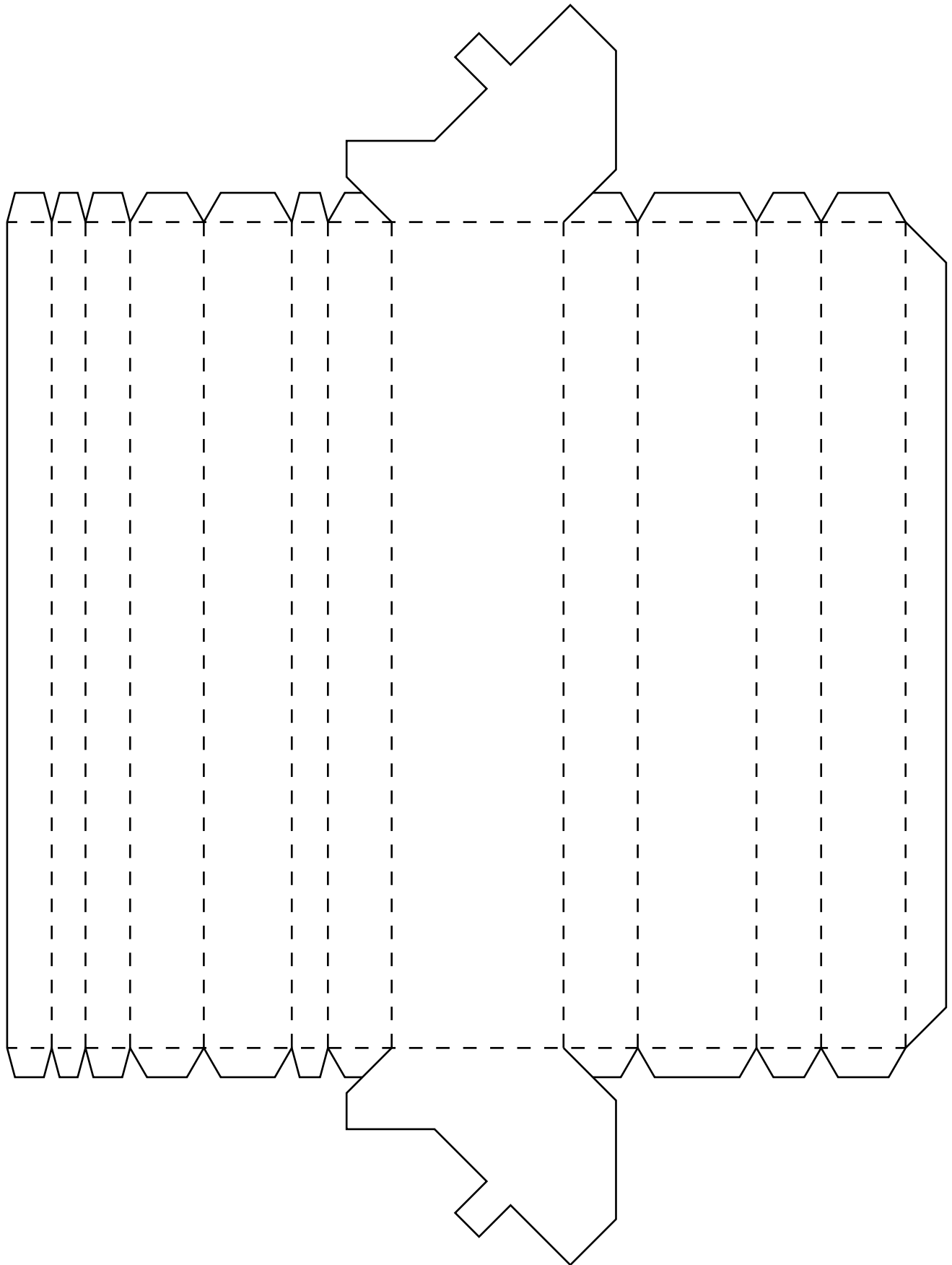
Finally, add the podium
at the bottom of these
twin skyscrapers.

Congratulations, you did it!
To share your artwork with others,
please see the last page.

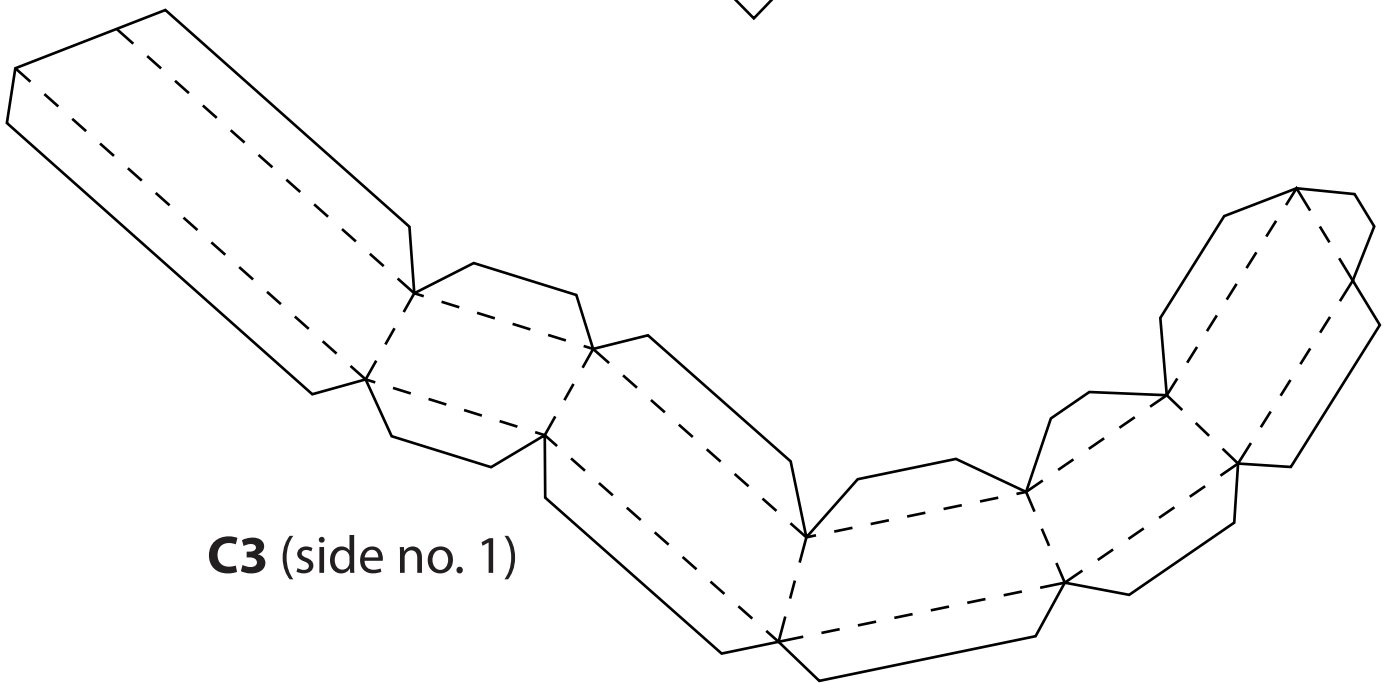
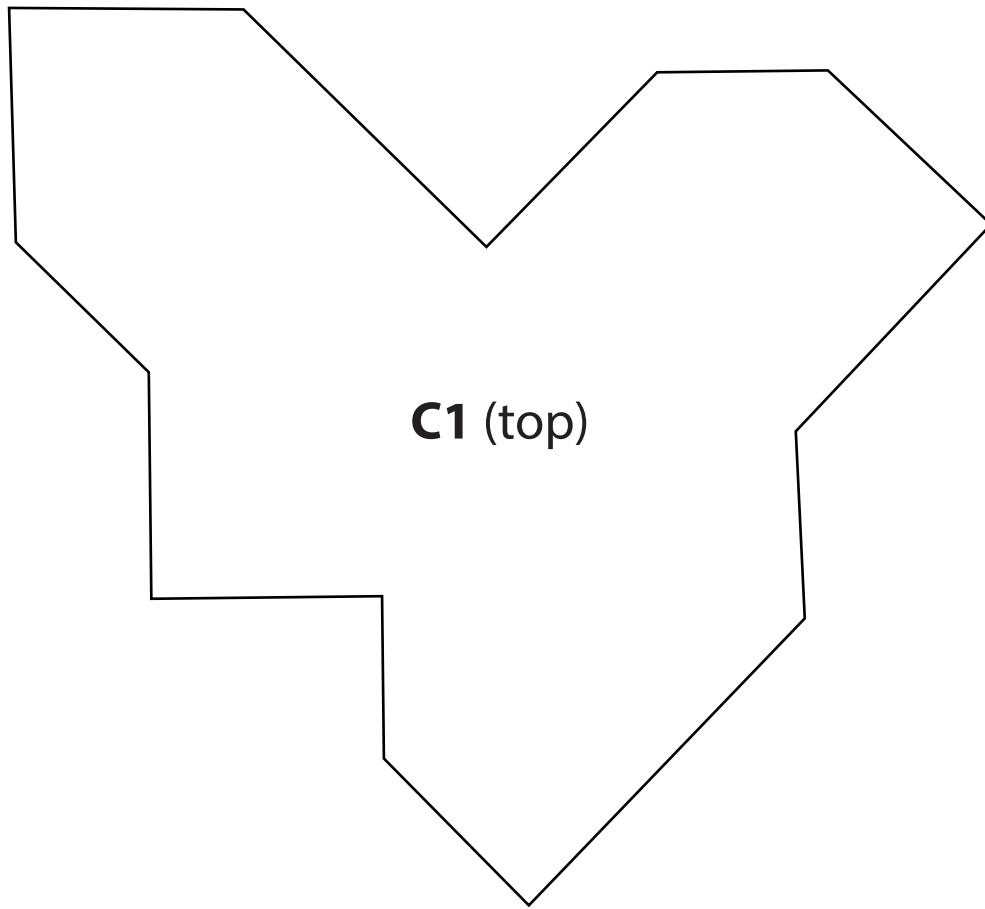
A (tower no. 1)



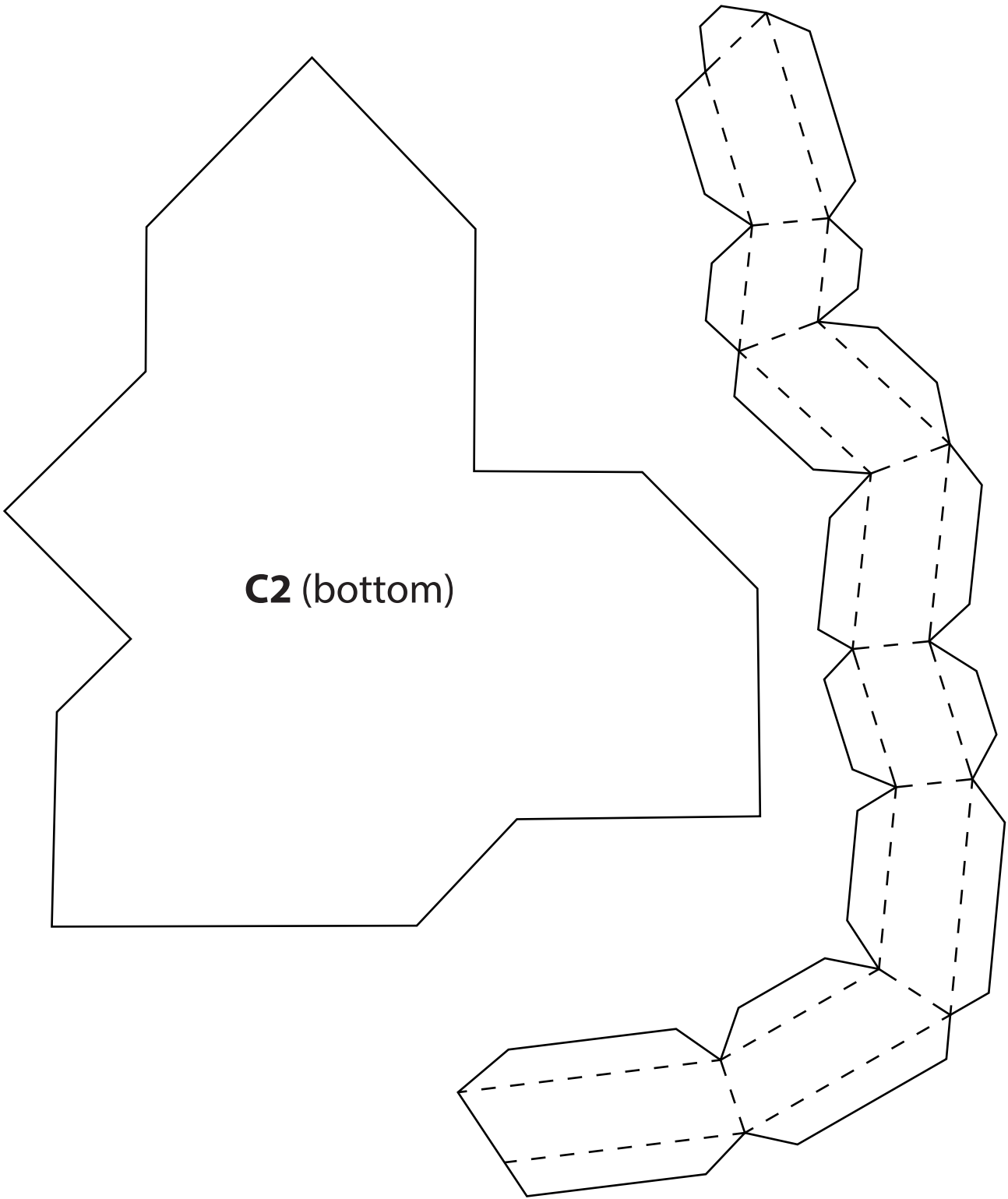
B (tower no. 2)



C (podium)



C (podium)



C2 (bottom)

C4 (side no. 2)



ARCHITECTURE *with sauce*

This tinker set has been provided by ARCHITECTURE with sauce, a project dedicated to offer crafting models.

Be sure to upload your building to the official gallery after you decorated it with colors or glitter: www.craftingmodels.com/upload/

You can share your artwork on social media using the tags #craftingmodel #frankfurt and #deutschebank.

Hungry for building more? You can download additional crafting sets directly online at www.craftingmodels.com



Deutsche Bank Headquarters

CRAFTING MODEL 1:1000

difficulty: medium



To get more insights about the skyline of Frankfurt, its past and future developments, please visit us on www.skylineatlas.com - and follow us on social media.