



ARCHITECTURE

with sauce

Print out all parts and paint them in your favorite colors, before cutting them out.

Glue the page containing the building body onto a piece of thick paper.

Cut out all parts with scissors.

Use a ruler and a wooden stick to scratch the black dashed lines, this will make them fold easier.

Add all parts to the body step by step. The instructions on the next page will help you to do so. Afterwards, decorate your tower!



Empire State Building

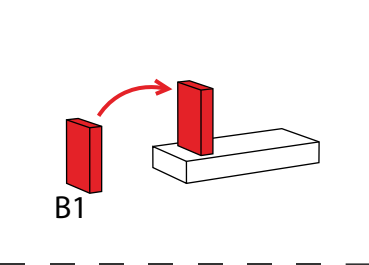
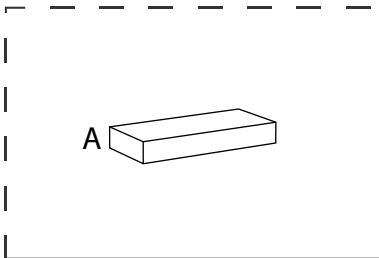
CRAFTING MODEL

JUNIOR VERSION

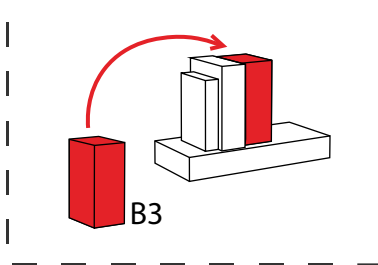
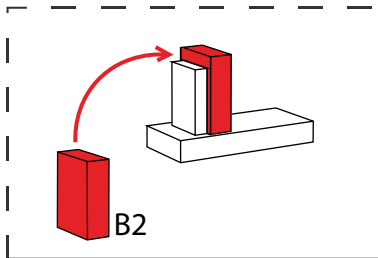
SIMPLIFIED

The creation of this crafting set
was made possible by:

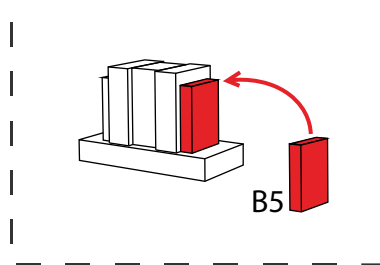
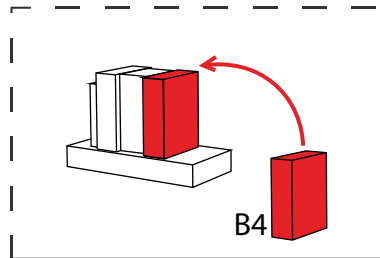




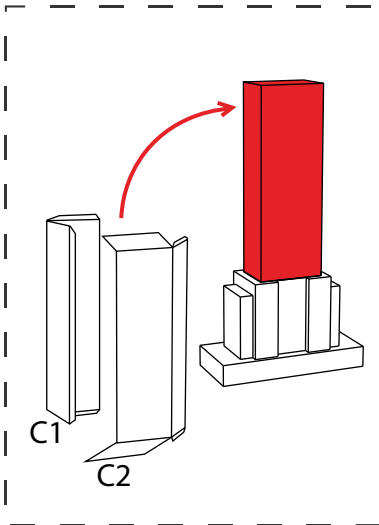
Start with the rectangular base. Then, fold the bottom part and glue it on top of the base.



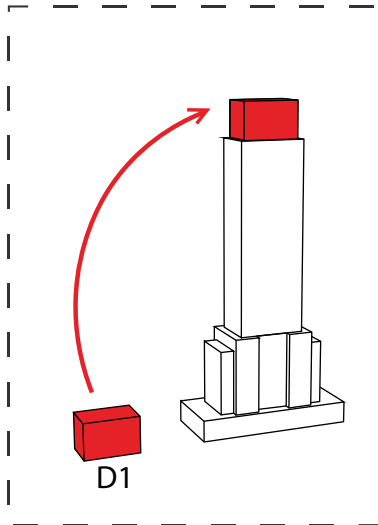
Fold the next part, and glue it next to the previous one. Repeat it in the middle.



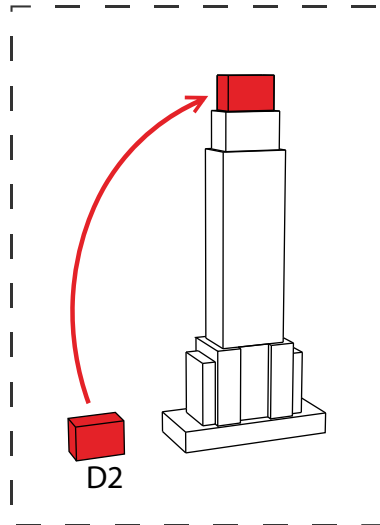
Complete the base by repeating the steps on the right side.



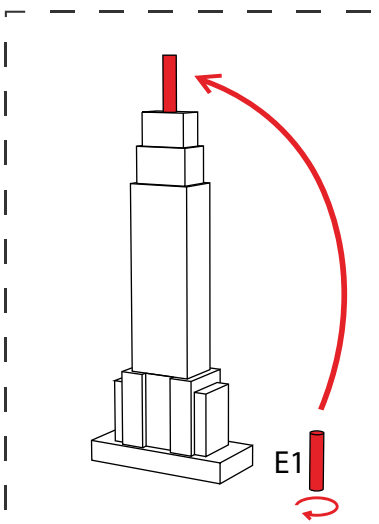
Fold and glue the two parts of the main body and glue it on top of the base.



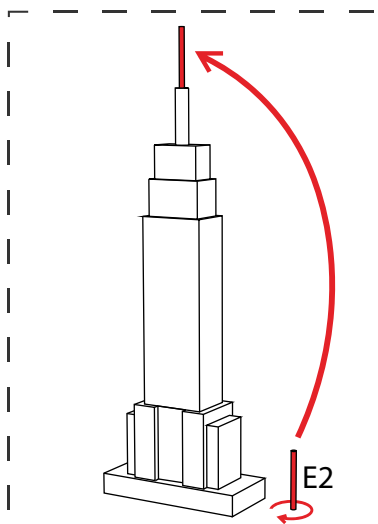
Fold the D1 block and glue it to the top of the main body.



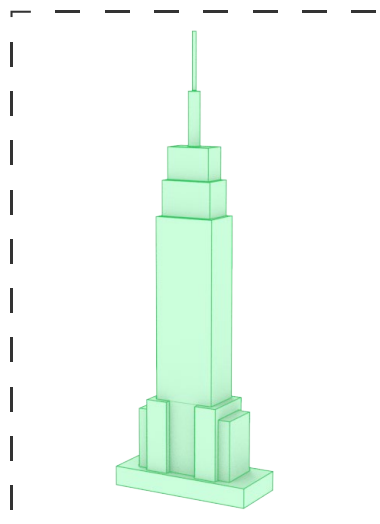
Fold the D2 block and attach it to the top of the D1 block.



Roll the antenna base, glue its covers and then glue it on the center.

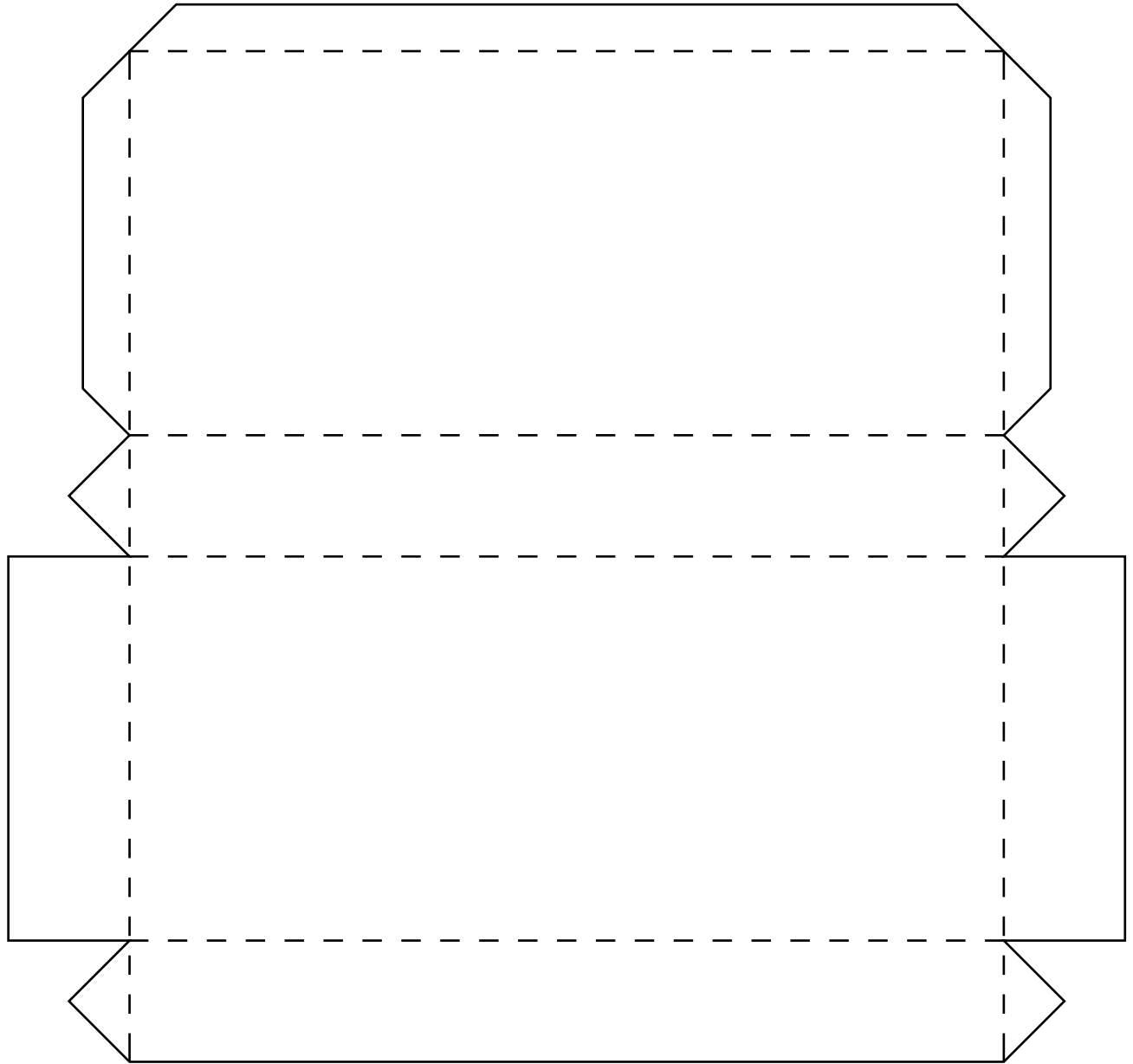


Finally, roll the antenna and glue it on the top of the building.

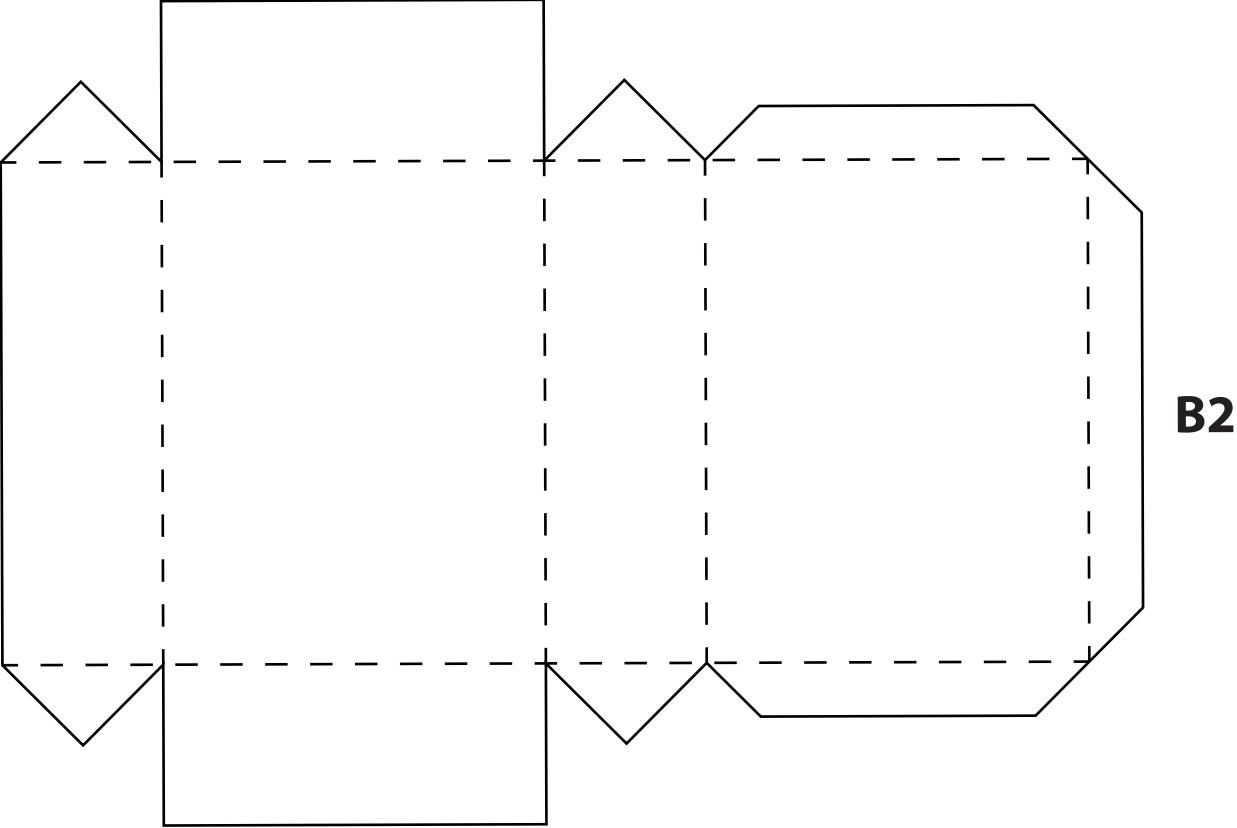


Congratulations, you did it! To share your artwork with others, please see the last page.

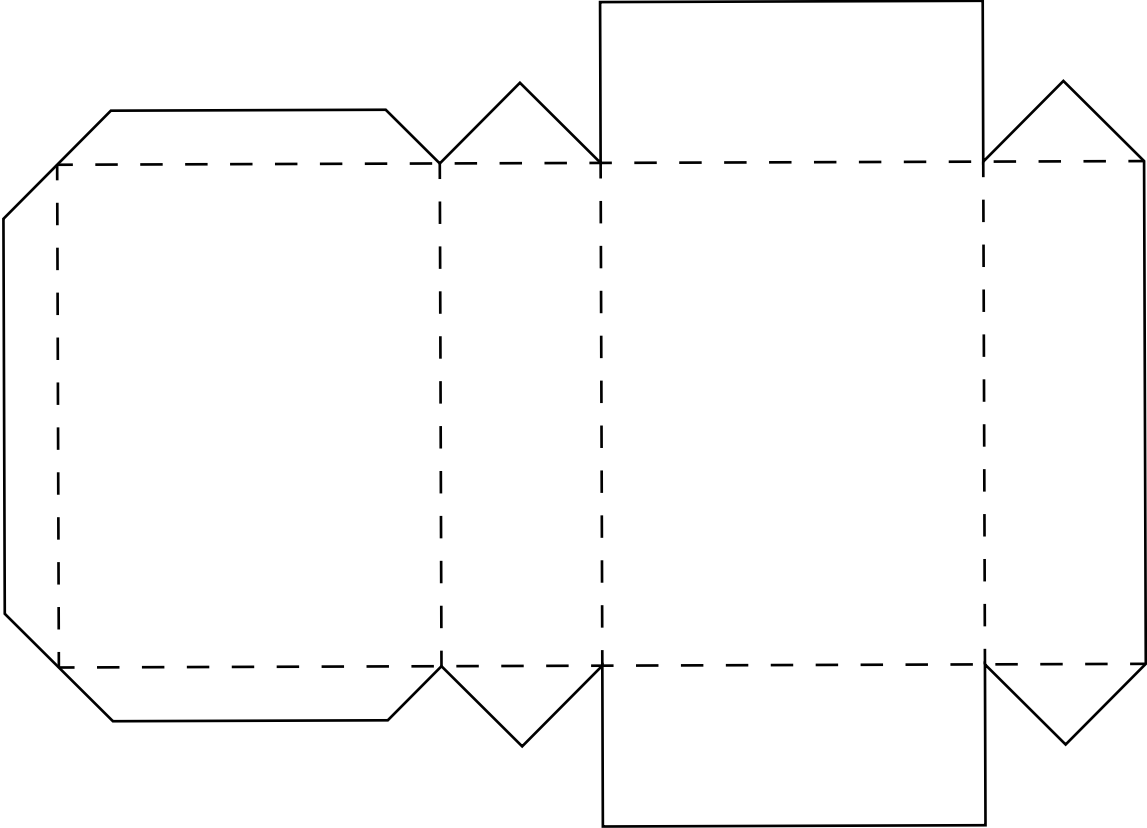
A (base)



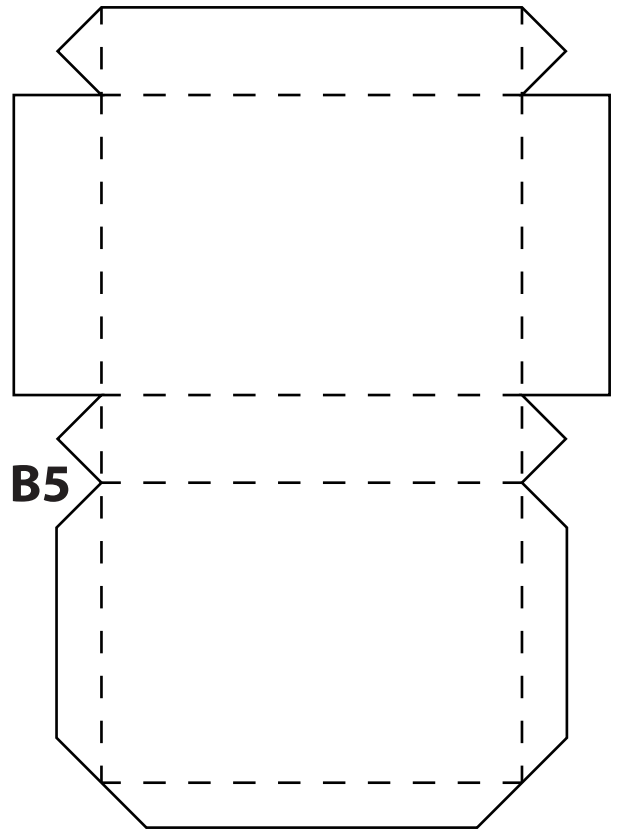
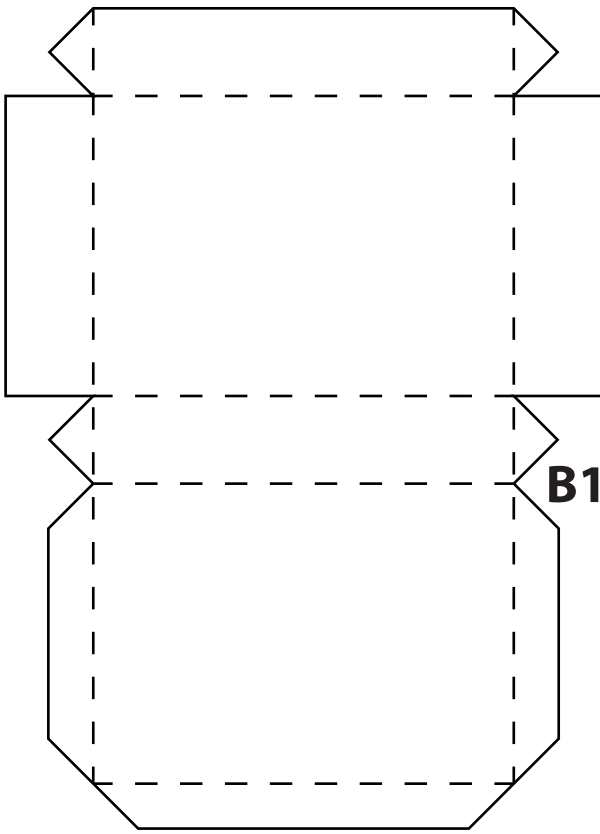
B (bottom)



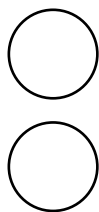
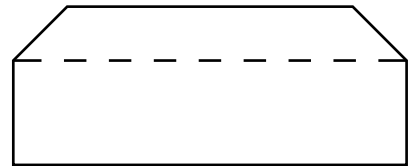
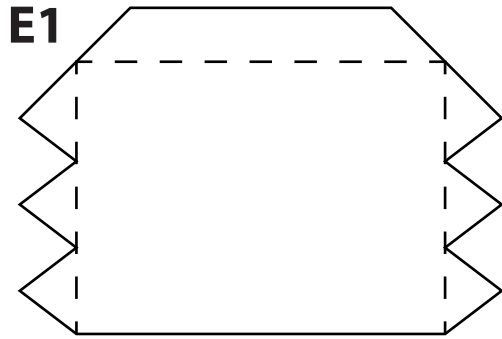
B4



B (bottom)

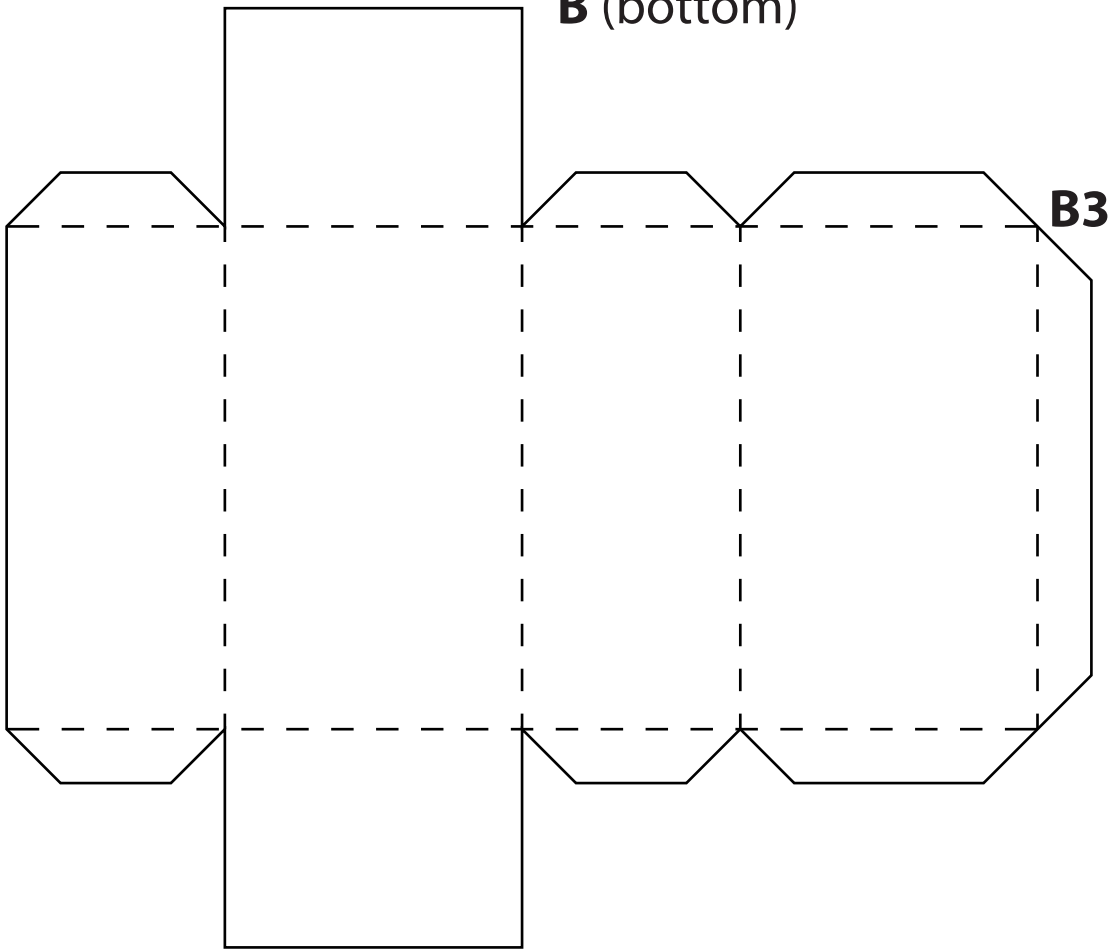


E (antenna)

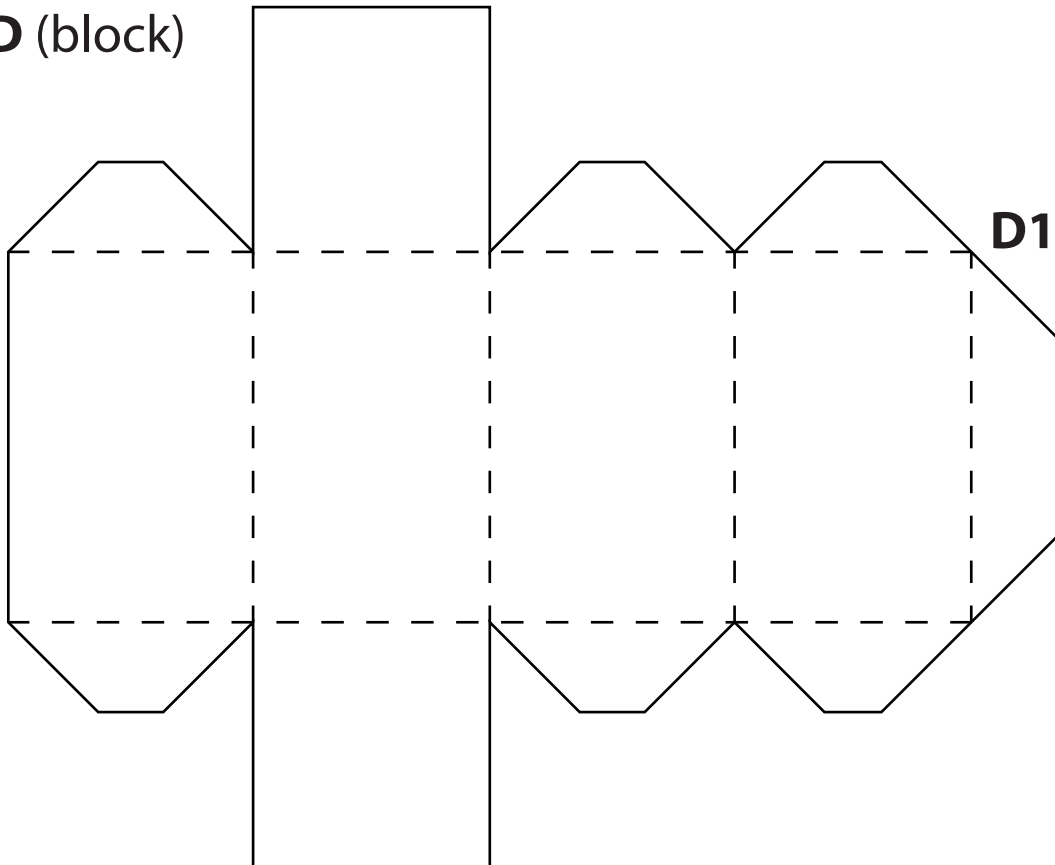


(covers)

B (bottom)



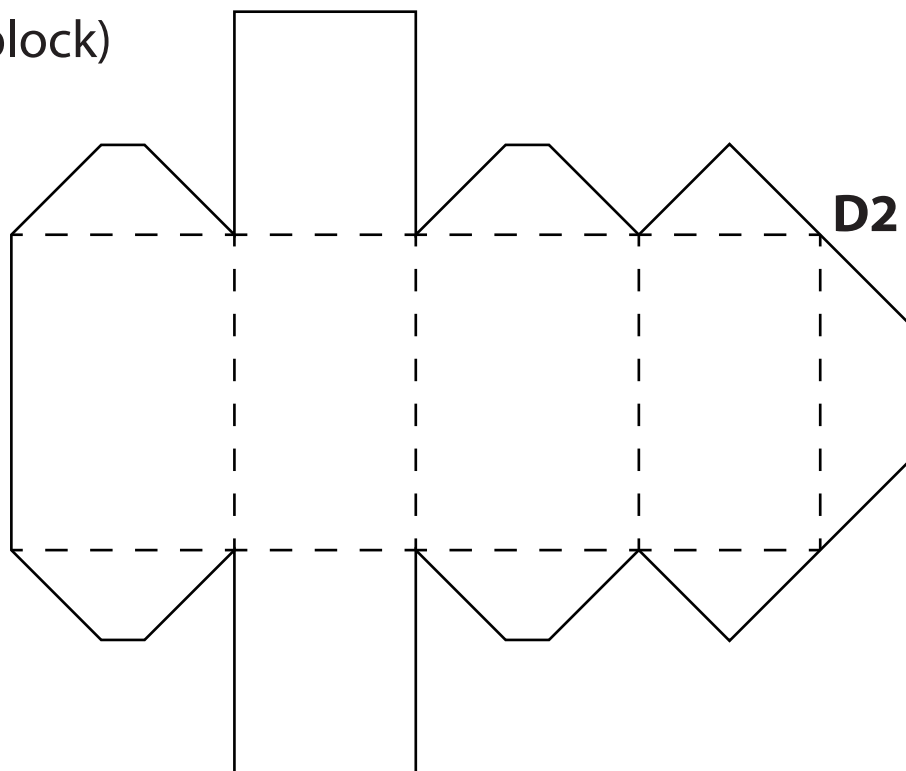
D (block)



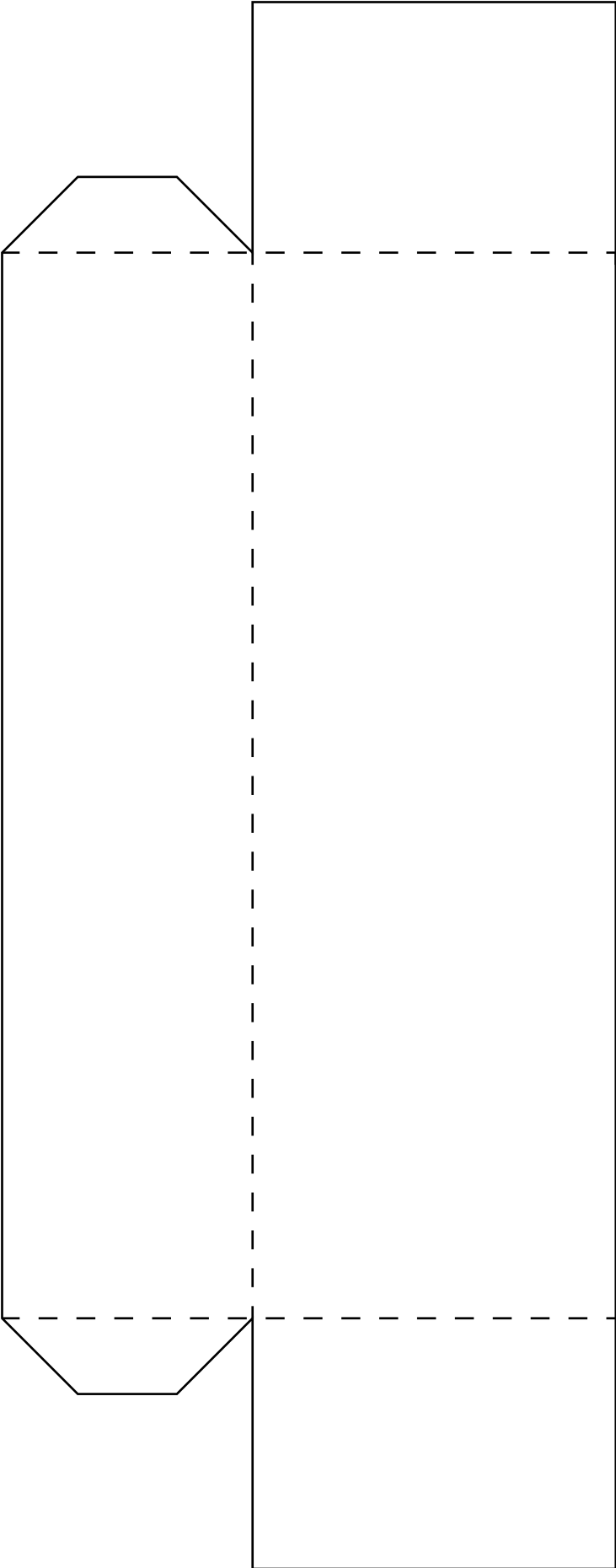
C1 (main body)



D (block)



C2 (main body)





ARCHITECTURE

with sauce



This tinker set has been provided by ARCHITECTURE with sauce, a project dedicated to offer crafting models.

Be sure to upload your building to the official gallery after you decorated it with colors or glitter: www.craftingmodels.com/upload/

You can share your artwork on social media using the tags #craftingmodel #nyc #esb and #empirestatebuilding.

Hungry for building more? You can download additional crafting sets directly online at www.craftingmodels.com



Empire State Building

CRAFTING MODEL 1:1000

difficulty: hard ★★★★★



Visit the world's largest database of skyscrapers and tall buildings on www.skydb.net. Be sure to also follow @skydb_net on social media.