



# ARCHITECTURE

*with sauce*

Print out all parts and paint them in your favorite colors, before cutting them out.

Glue the page containing the building body onto a piece of thick paper.

Cut out all parts with scissors.

Use a ruler and a wooden stick to scratch the black dashed lines, this will make them fold easier.

Add all parts to the body step by step. The instructions on the next page will help you to do so. Afterwards, decorate your tower!

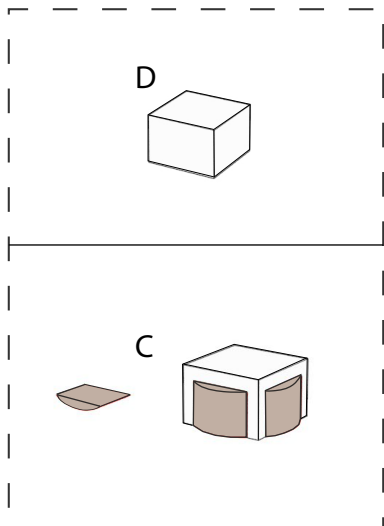


## MESSETURM

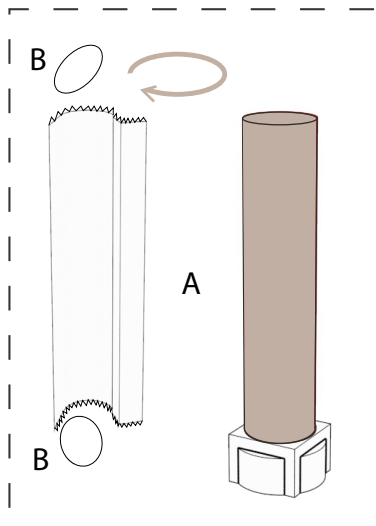
CRAFTING MODEL

**PRO VERSION**  
DETAILED

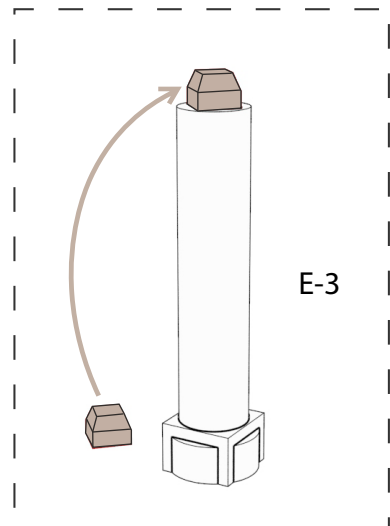




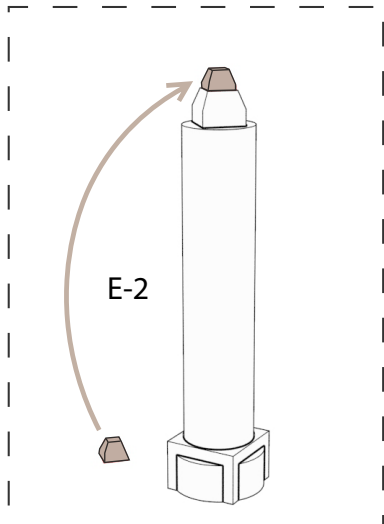
Fold the base and glue it together. Afterwards, stick the windows to its sides.



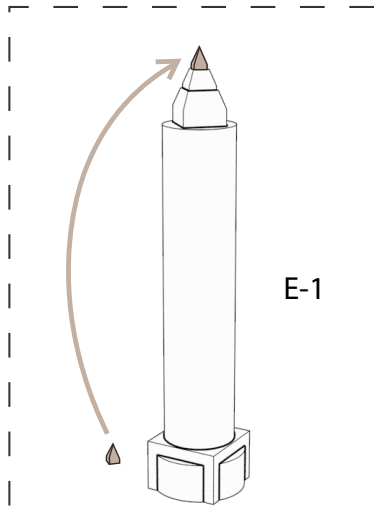
Fold the building body, close both ends with covers, and attach the body to the base.



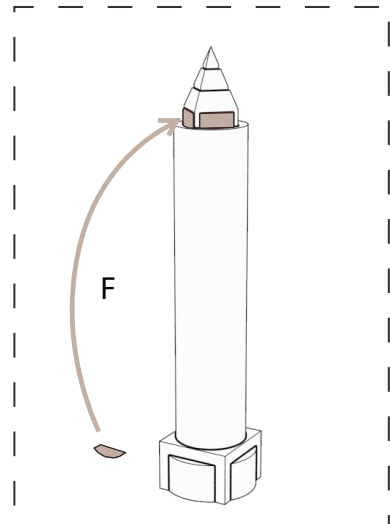
Now, glue the lower section of the pyramid to the top of the circular body.



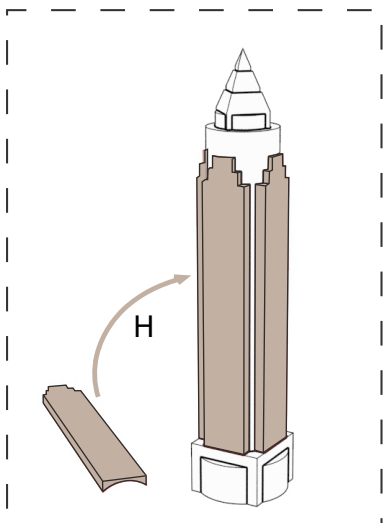
Then, attach the middle part of the pyramid to the bottom piece.



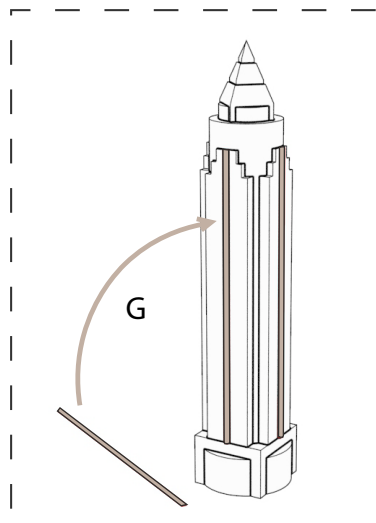
After that, glue the top section of the pyramid to the middle part.



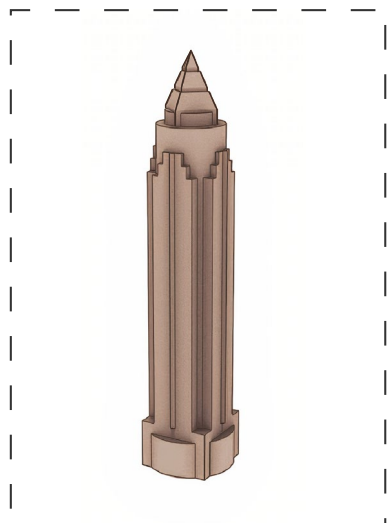
When the top is completed, fold the podiums, and glue them to the pyramid.



Create the side parts for the circular body. Fold them and glue them to all four sides.

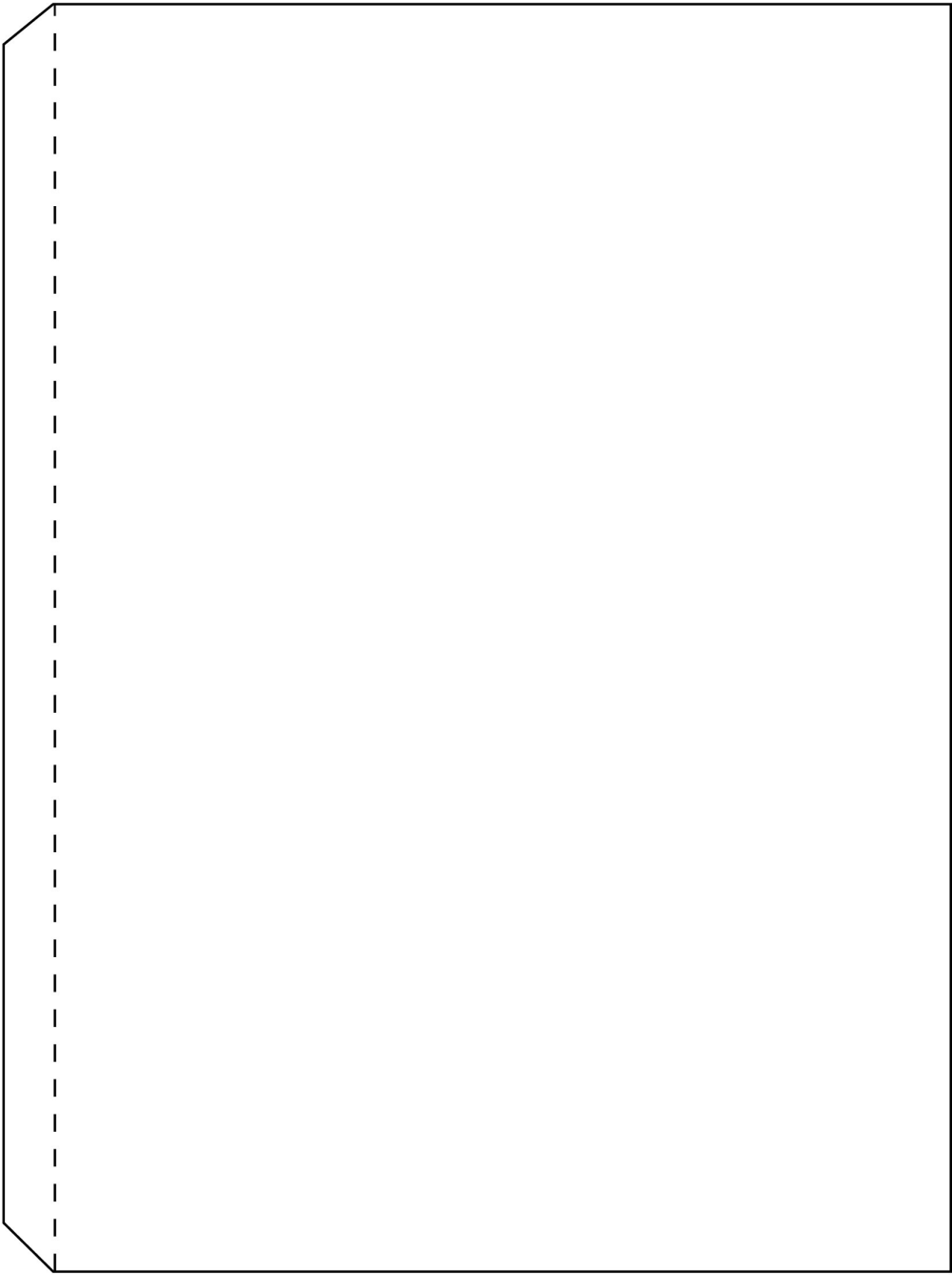


Fold the edge stretches and glue them in the middle of side bodies.

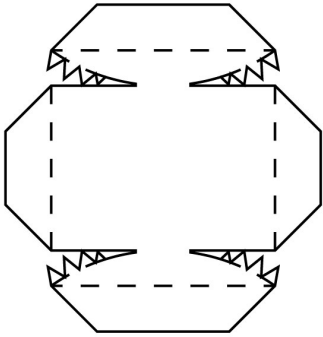
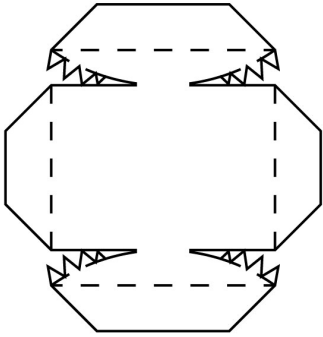
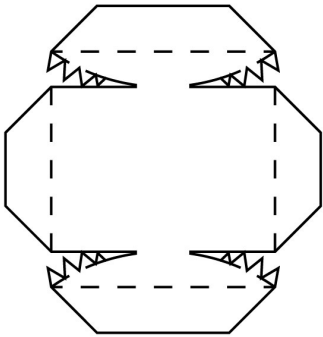


Congratulations, you did it!  
To share your artwork with others,  
please see the last page.

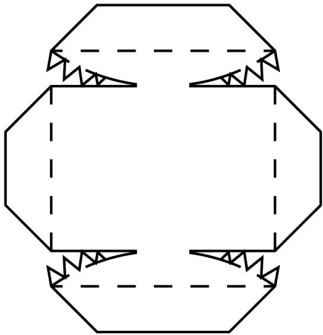
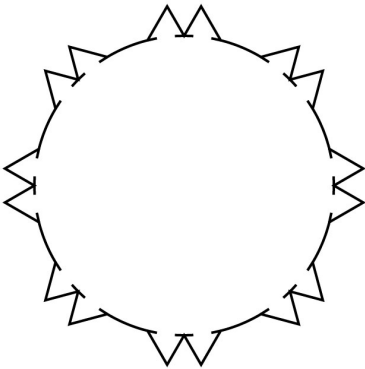
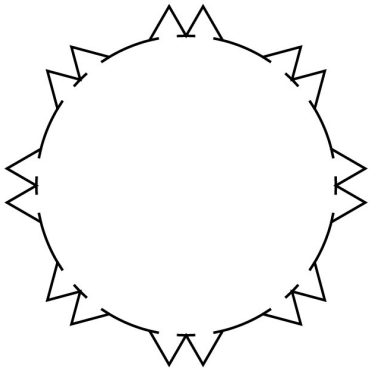
**A** (building body)

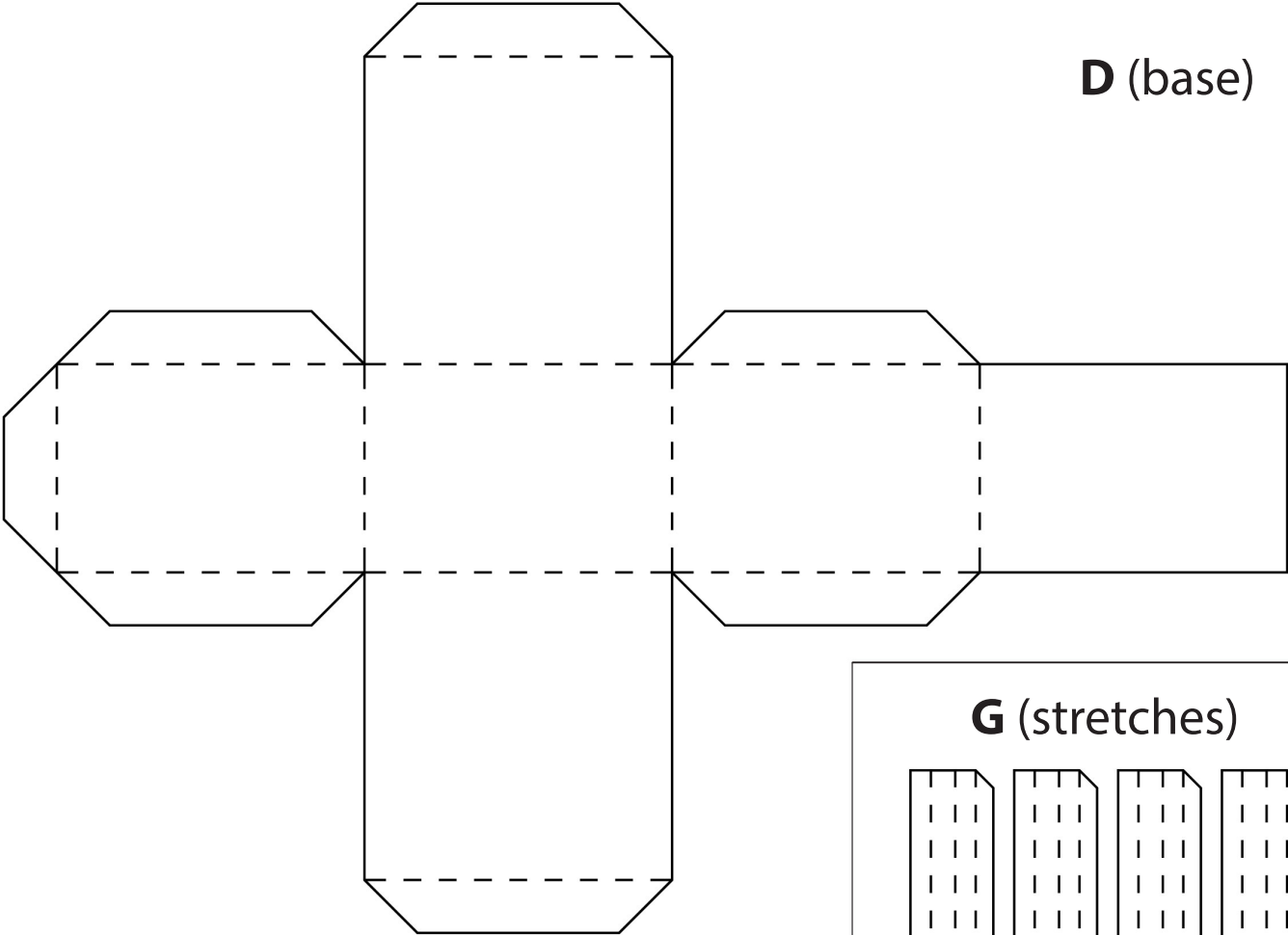


**C** (big windows)



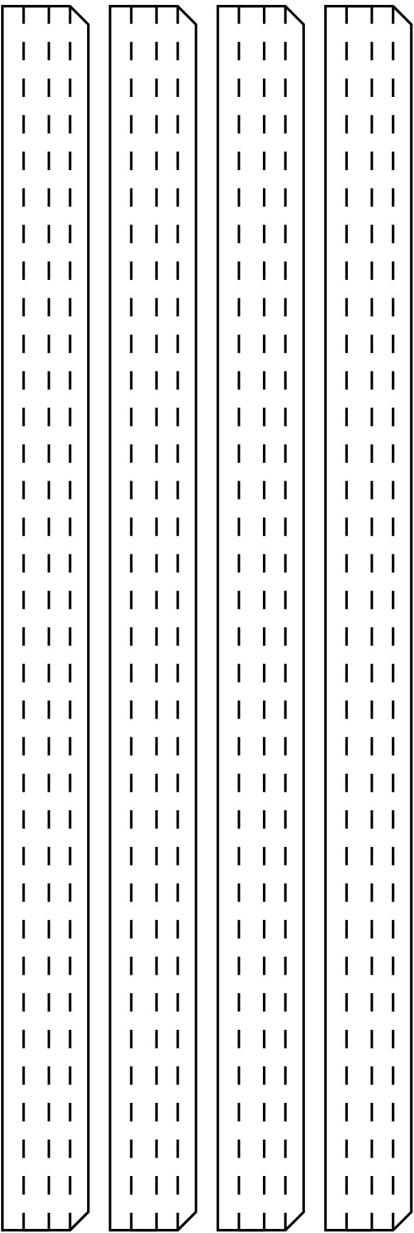
**B** (covers)



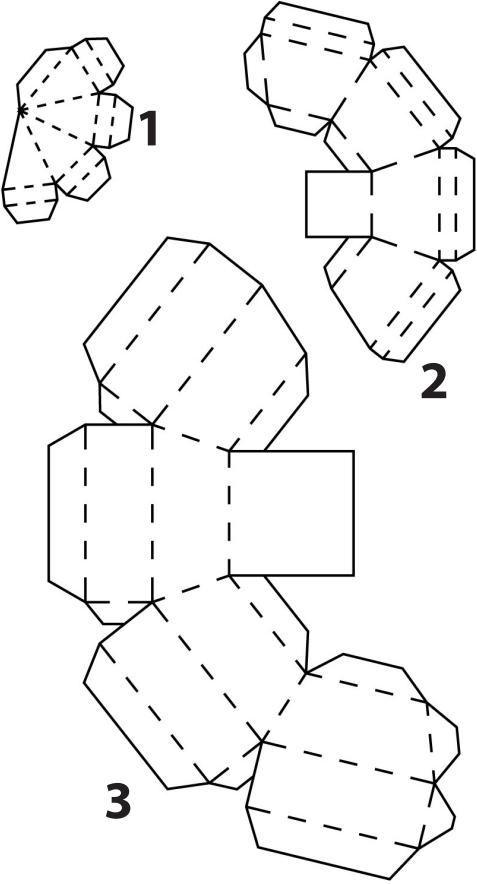


**D** (base)

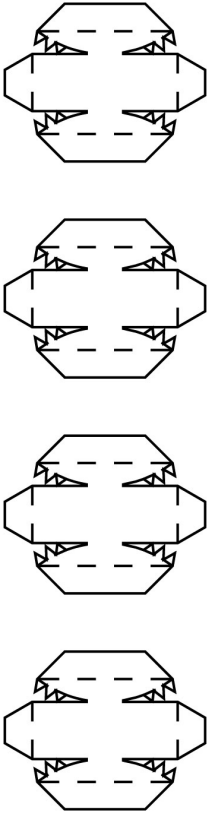
**G** (stretches)



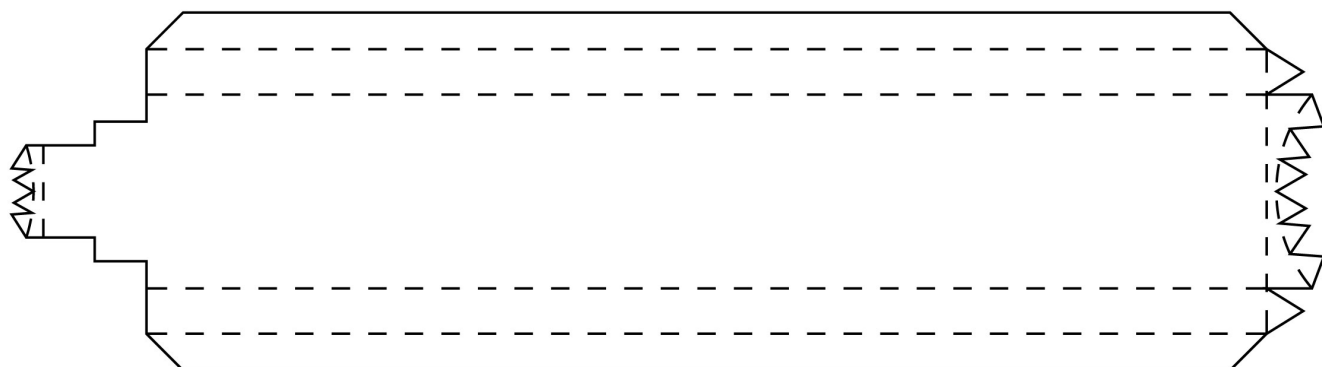
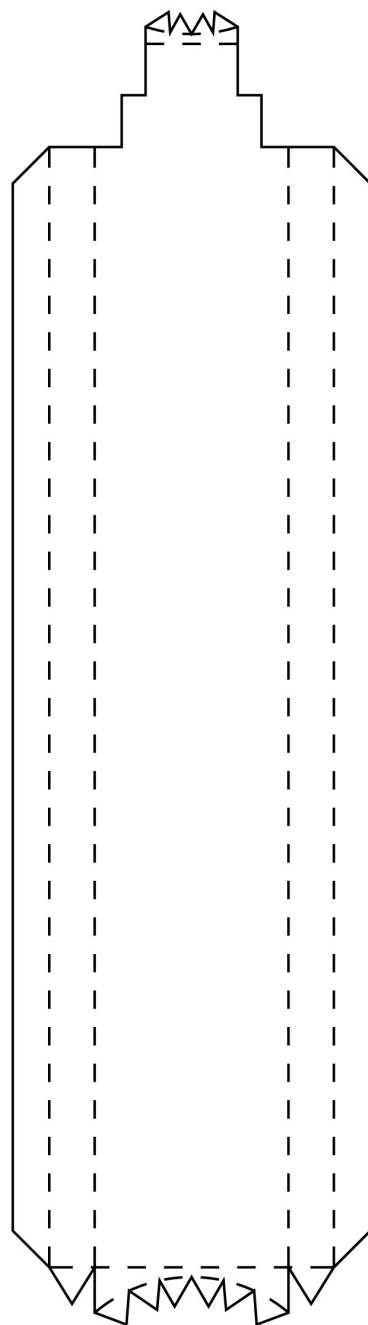
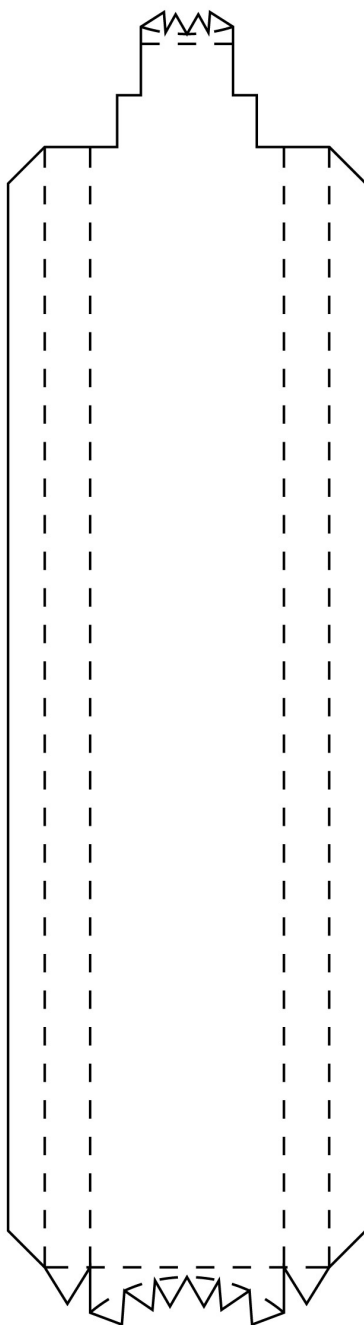
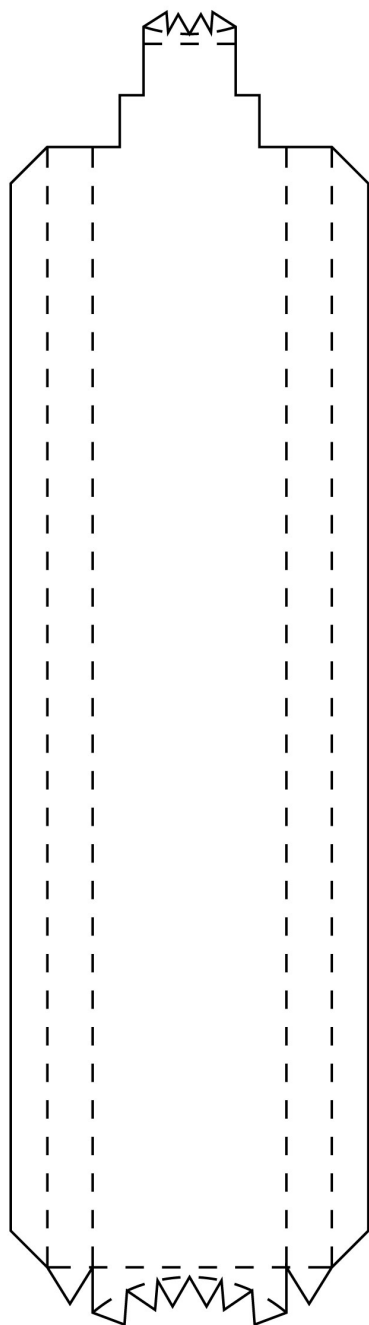
**E** (pyramid)



**F** (podium)



# H (side parts)





# ARCHITECTURE

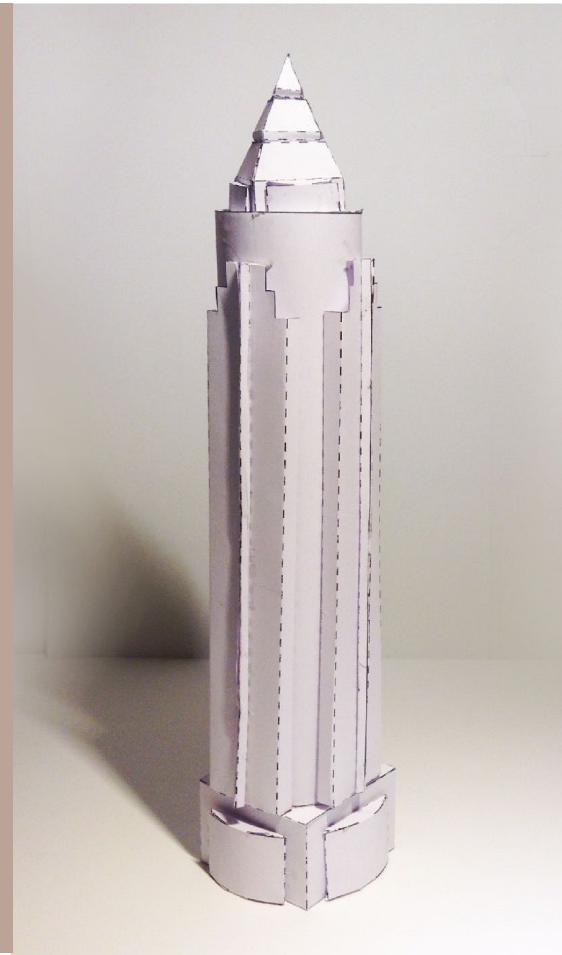
*with sauce*

This tinker set has been provided by ARCHITECTURE with sauce, a project dedicated to offer crafting models.

Be sure to upload your building to the official gallery after you decorated it with colors or glitter: [www.craftingmodels.com/upload/](http://www.craftingmodels.com/upload/)

You can share your artwork on social media using the tags #craftingmodel #frankfurt and #messeturm.

Hungry for building more? You can download additional crafting sets directly online at [www.craftingmodels.com](http://www.craftingmodels.com)



## MESSETURM

CRAFTING MODEL 1:1000

difficulty: hard

