



# ARCHITECTURE

*with sauce*



Print out all parts and paint them in your favorite colors, before cutting them out.

Glue the page containing the building body onto a piece of thick paper.

Cut out all parts with scissors.

Use a ruler and a wooden stick to scratch the black dashed lines, this will make them fold easier.

Add all parts to the body step by step. The instructions on the next page will help you to do so. Afterwards, decorate your tower!



## The Leadenhall Building

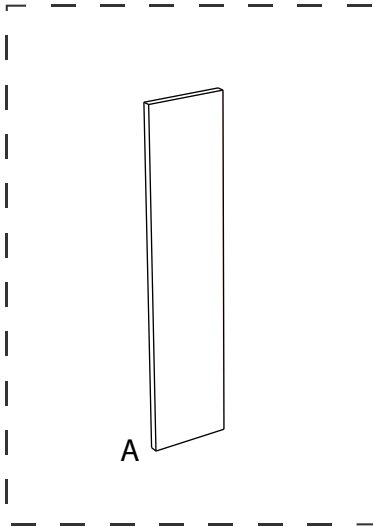
CRAFTING MODEL

JUNIOR VERSION

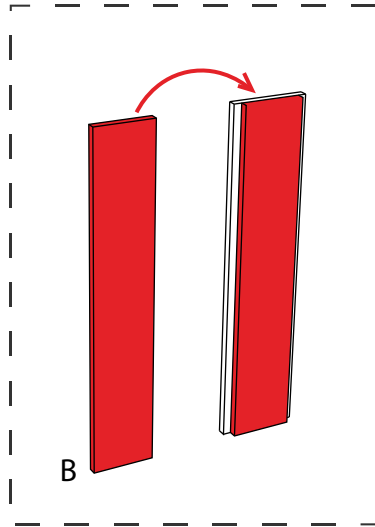
SIMPLIFIED

The creation of this crafting set  
was made possible by:

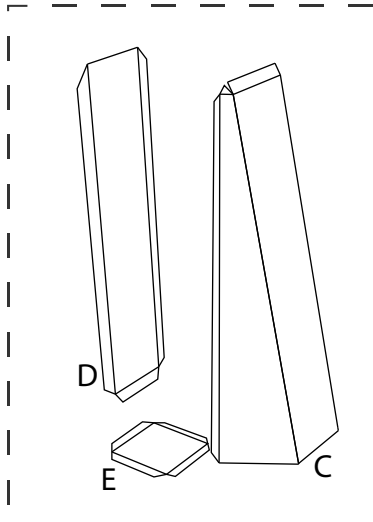




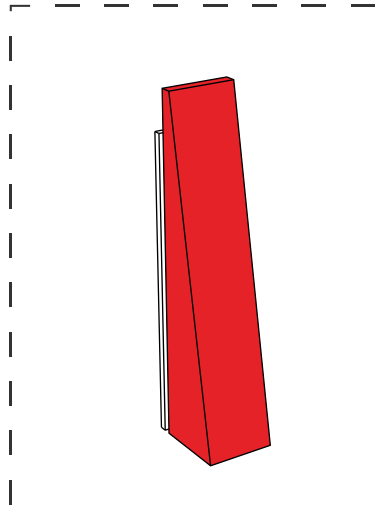
Start with the back part of the building body, fold it and stick it.



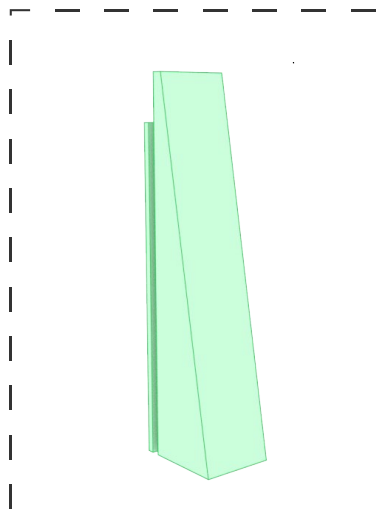
Fold the next part and stick it to the front of the base.



Fold the 3 parts of the front body and stick them each other.

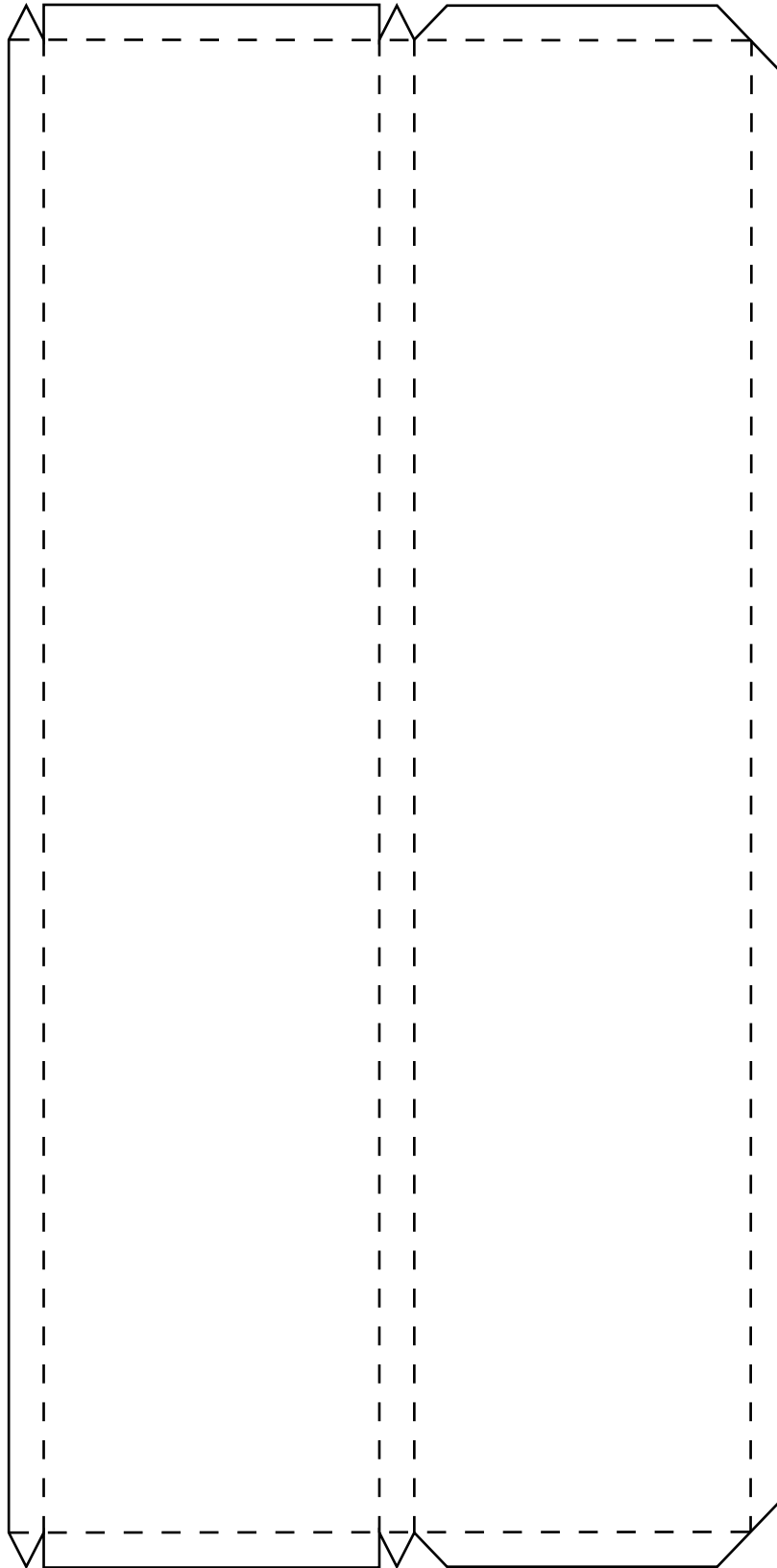


Then, attach it to the front body of the building.

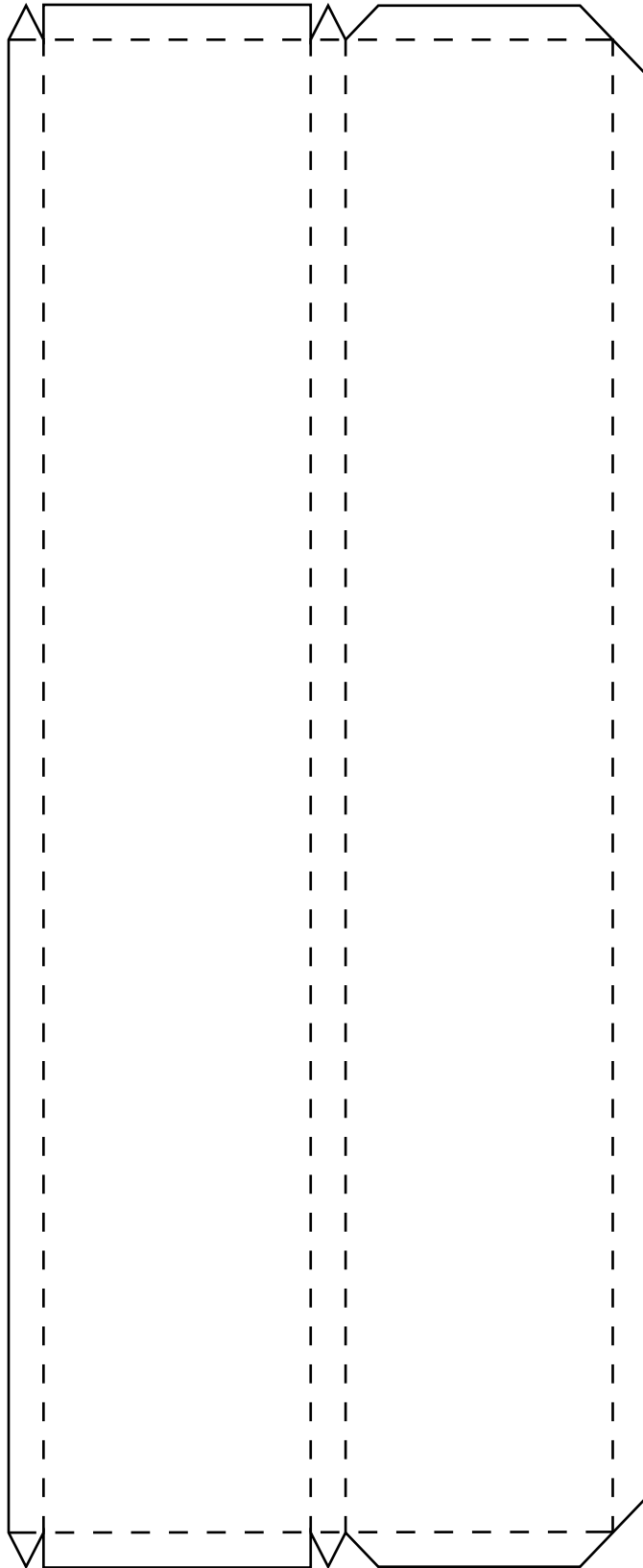


Congratulations, you did it!  
To share your artwork with others,  
please see the last page.

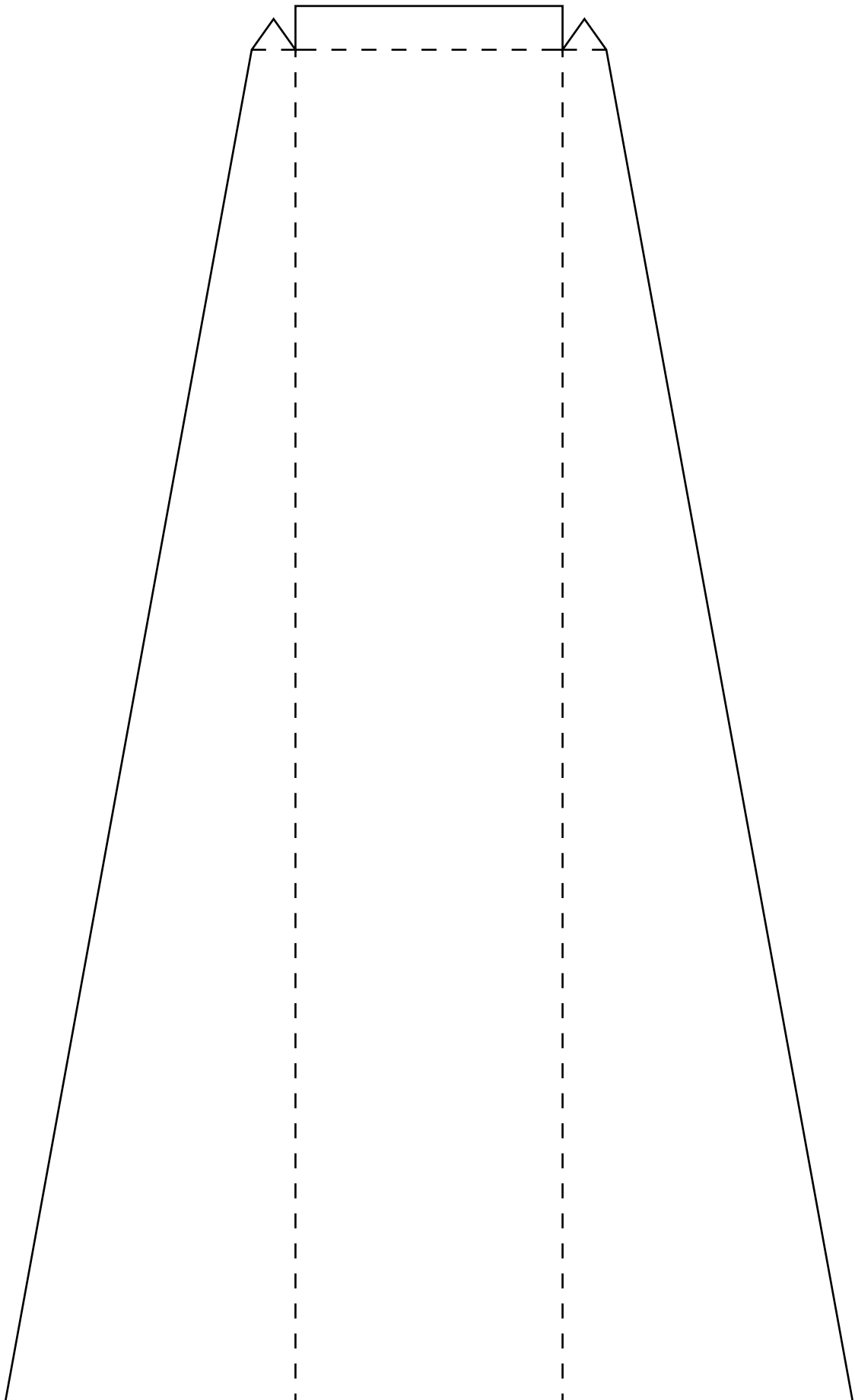
**A** (back part)



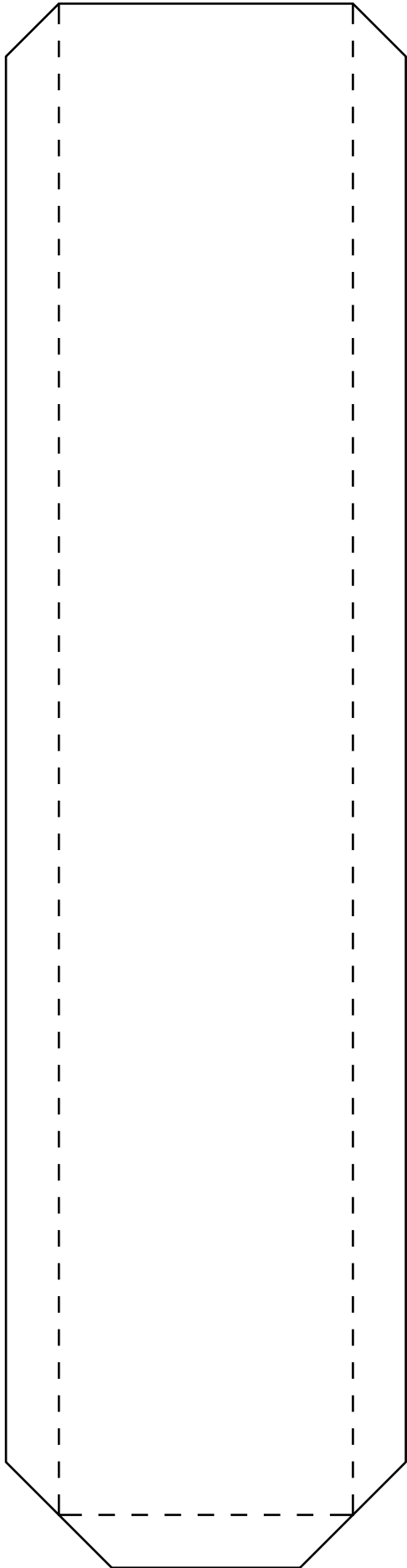
**B (middle part)**



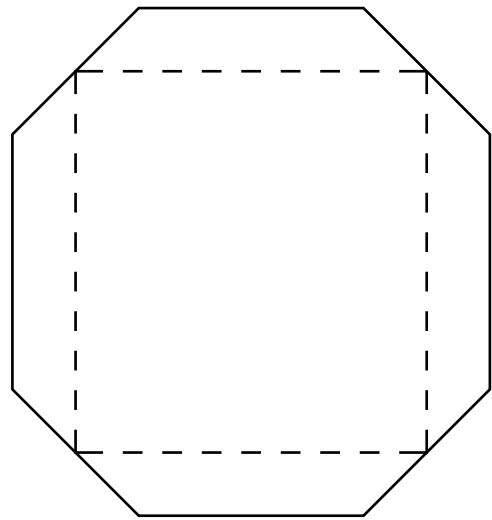
**C** (front part)



**D** (side)



**E** (bottom)





# ARCHITECTURE *with sauce*

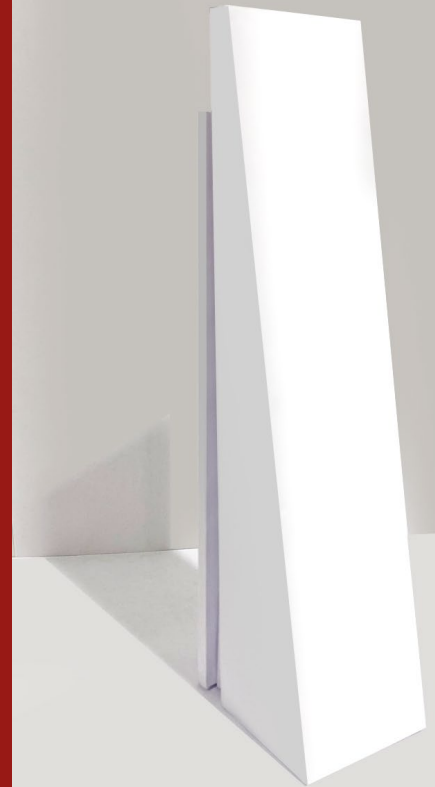


This tinker set has been provided by ARCHITECTURE with sauce, a project dedicated to offer crafting models.

Be sure to upload your building to the official gallery after you decorated it with colors or glitter: [www.craftingmodels.com/upload/](http://www.craftingmodels.com/upload/)

You can share your artwork on social media using the tags #craftingmodel #theleadenhall and #london.

Hungry for building more? You can download additional crafting sets directly online at [www.craftingmodels.com](http://www.craftingmodels.com)



## The Leadenhall Building

CRAFTING MODEL 1:1000

difficulty: medium



Visit the world's largest database of skyscrapers and tall buildings on [www.skydb.net](http://www.skydb.net). Be sure to also follow @skydb\_net on social media.