



# ARCHITECTURE

*with sauce*

Print out all parts and paint them in your favorite colors, before cutting them out.

Glue the page containing the building body onto a piece of thick paper.

Cut out all parts with scissors.

Use a ruler and a wooden stick to scratch the black dashed lines, this will make them fold easier.

Add all parts to the body step by step. The instructions on the next page will help you to do so. Afterwards, decorate your building!



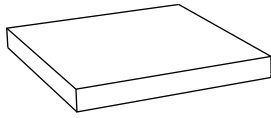
## German Architecture Museum

CRAFTING MODEL

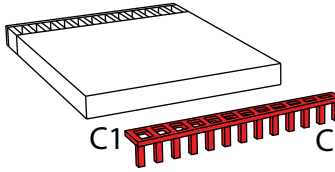
The creation of this crafting set  
was made possible by:



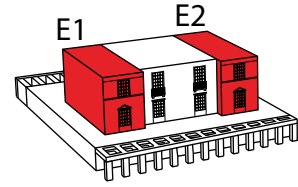
GESELLSCHAFT  
DER FREUNDE DES  
DEUTSCHEN  
ARCHITEKTUR  
MUSEUMS E.V.



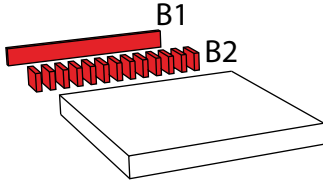
A1-A2



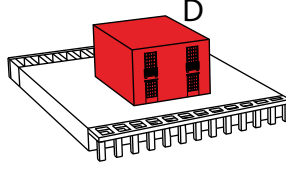
C1 C2



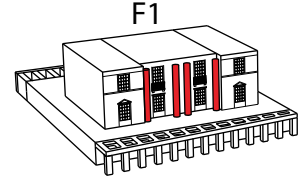
E1 E2



B1 B2



D

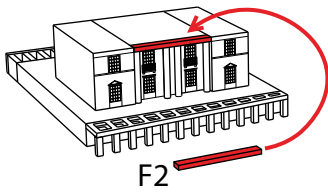


F1

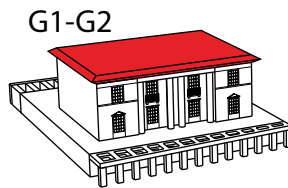
Start with the base. Then fold the back parts and connect them to the base.

Fold and stick the front parts and then add the middle part.

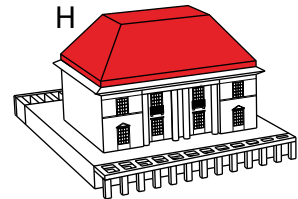
Add the columns to the front facade.



F2



G1-G2

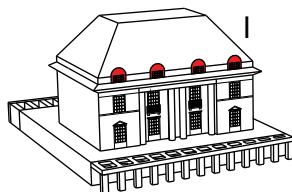


H

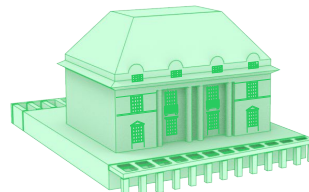
Fold the facade element and stick it on top of the columns.

Add the base of the roof and stick it to the building.

Fold the roof and stick mount it to the base of the roof.

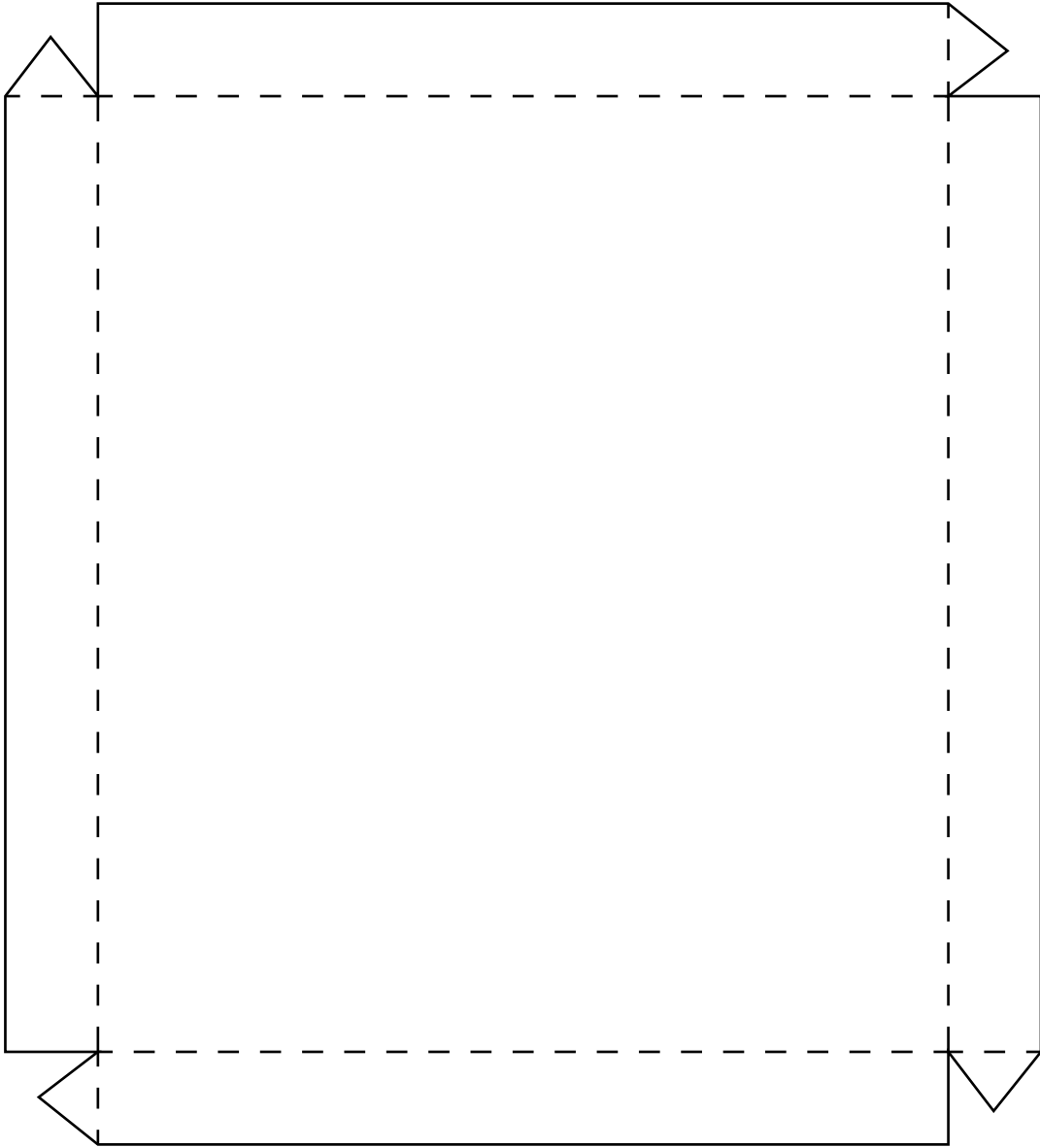


Finally, add the windows to the front side.

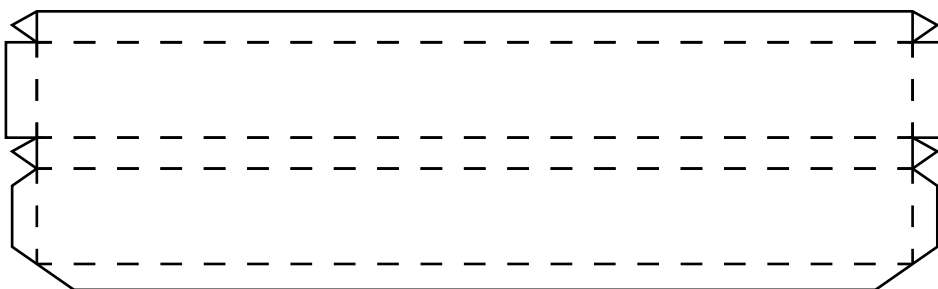


Congratulations, you did it! To share your artwork with others, please see the last page.

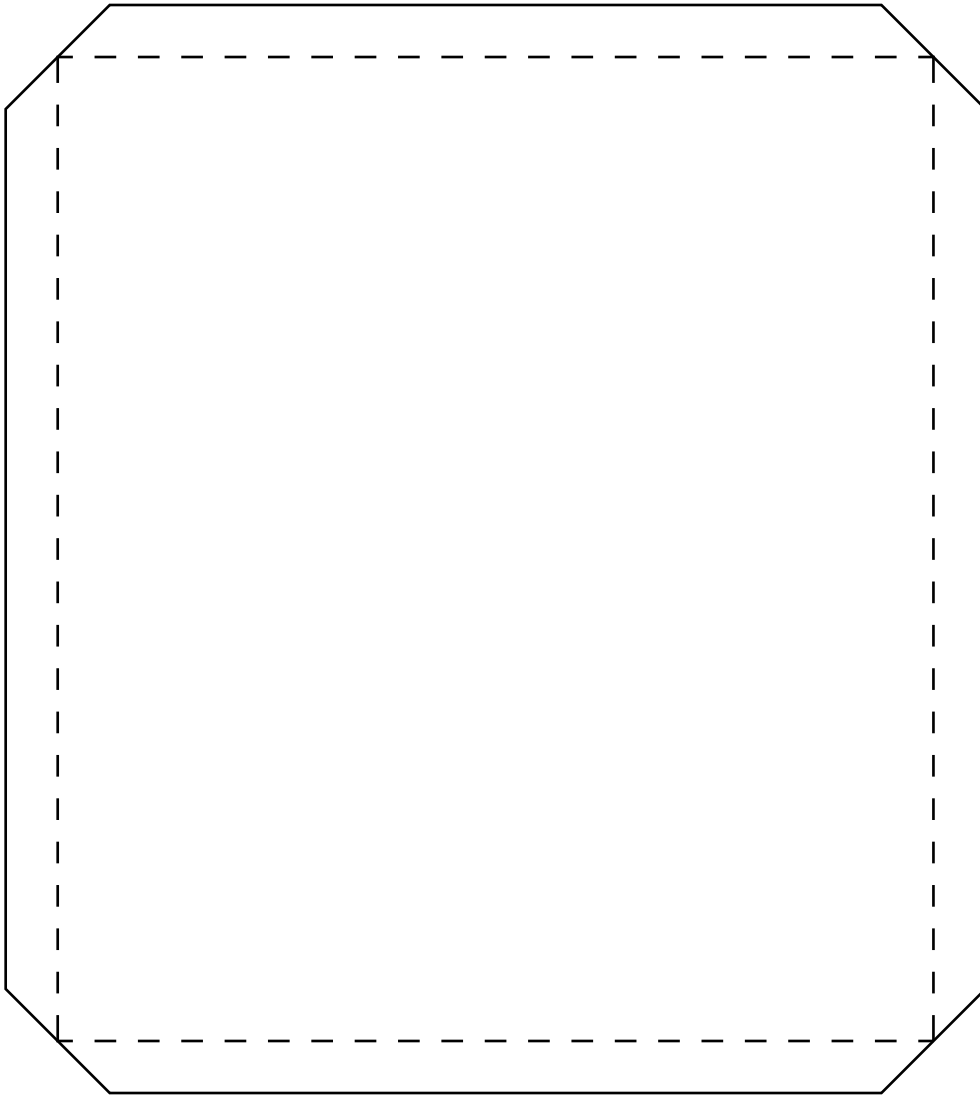
**A1 (base)**



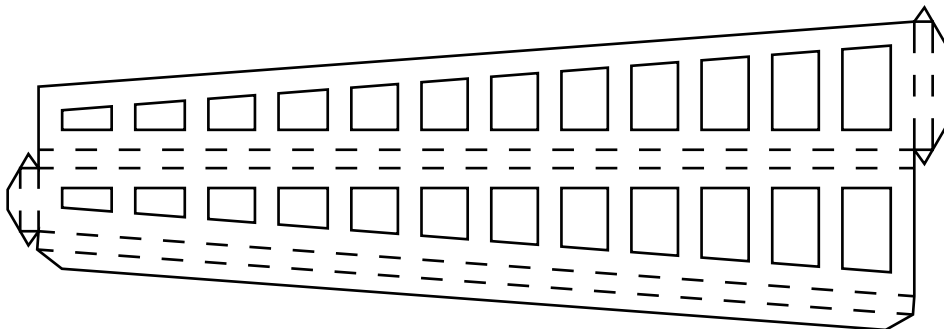
**B1 (back)**



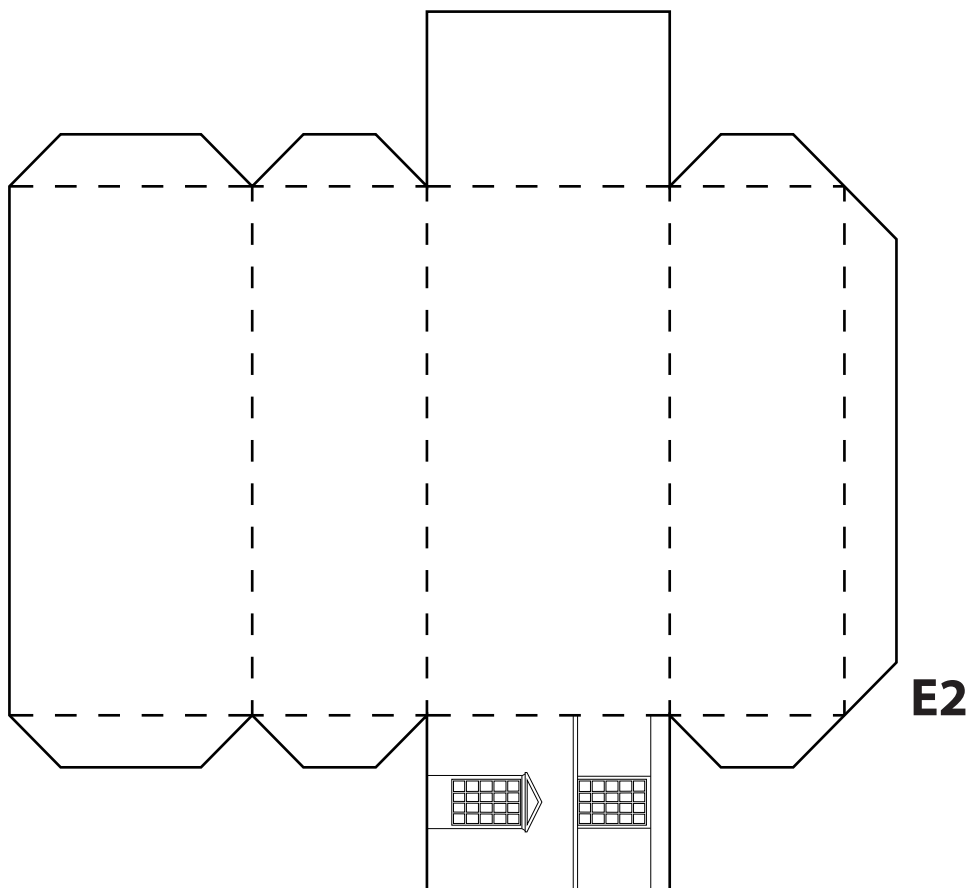
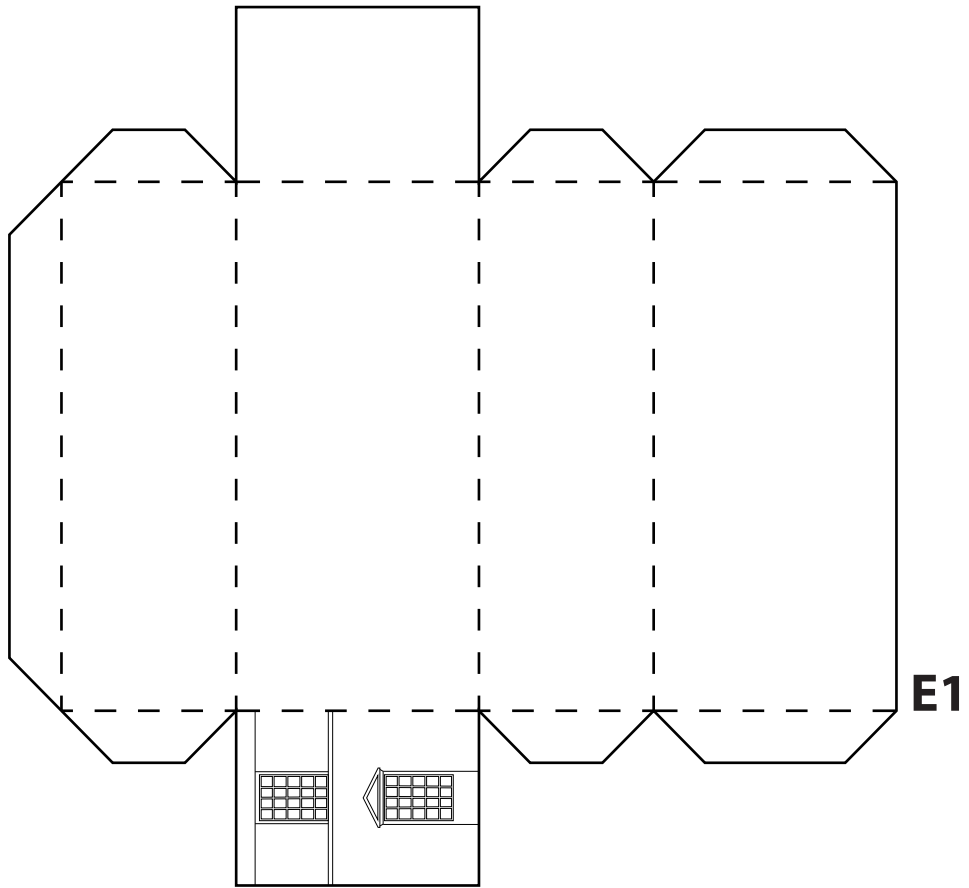
**A2** (base)



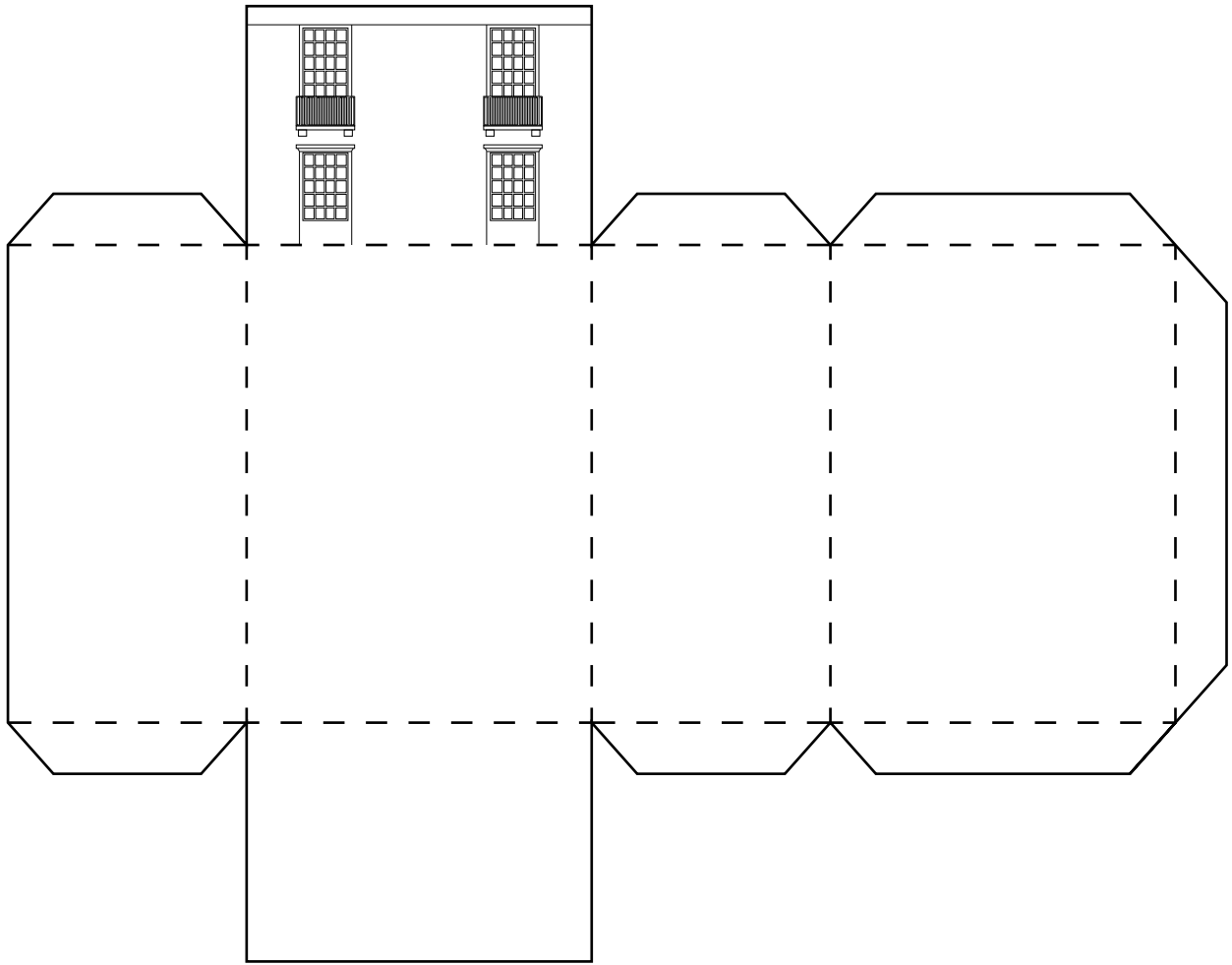
**C1** (frontside roof)



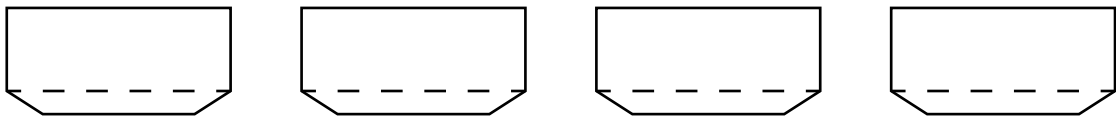
# E (side)



## D (middle)



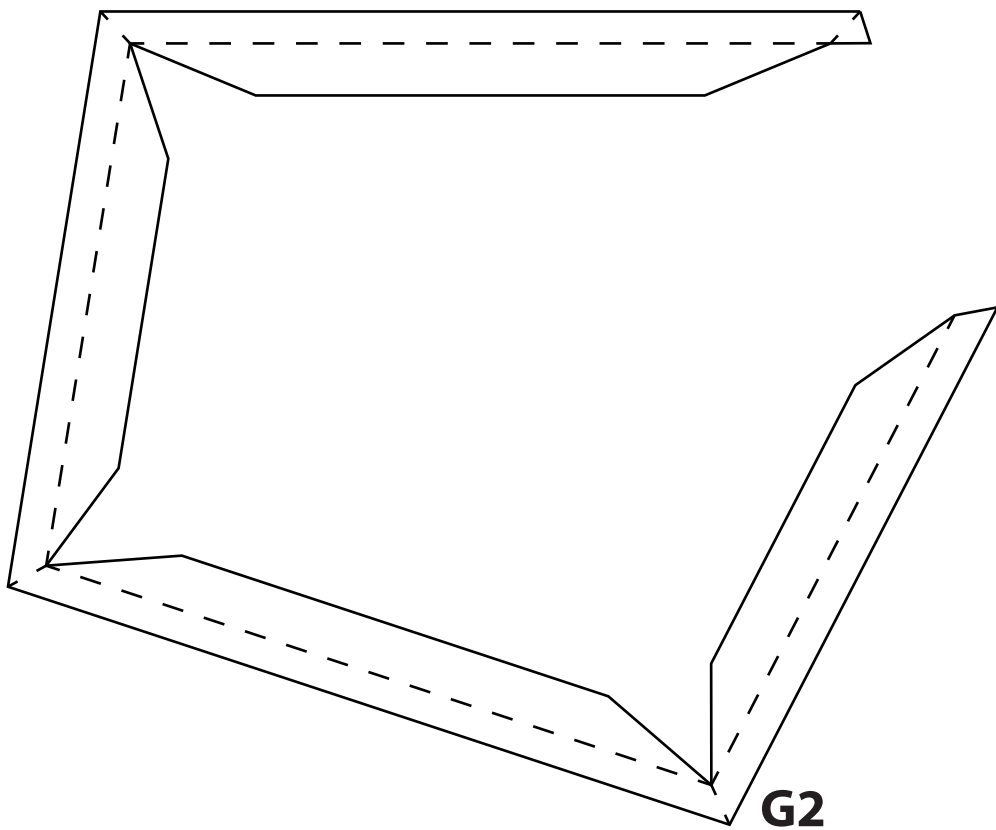
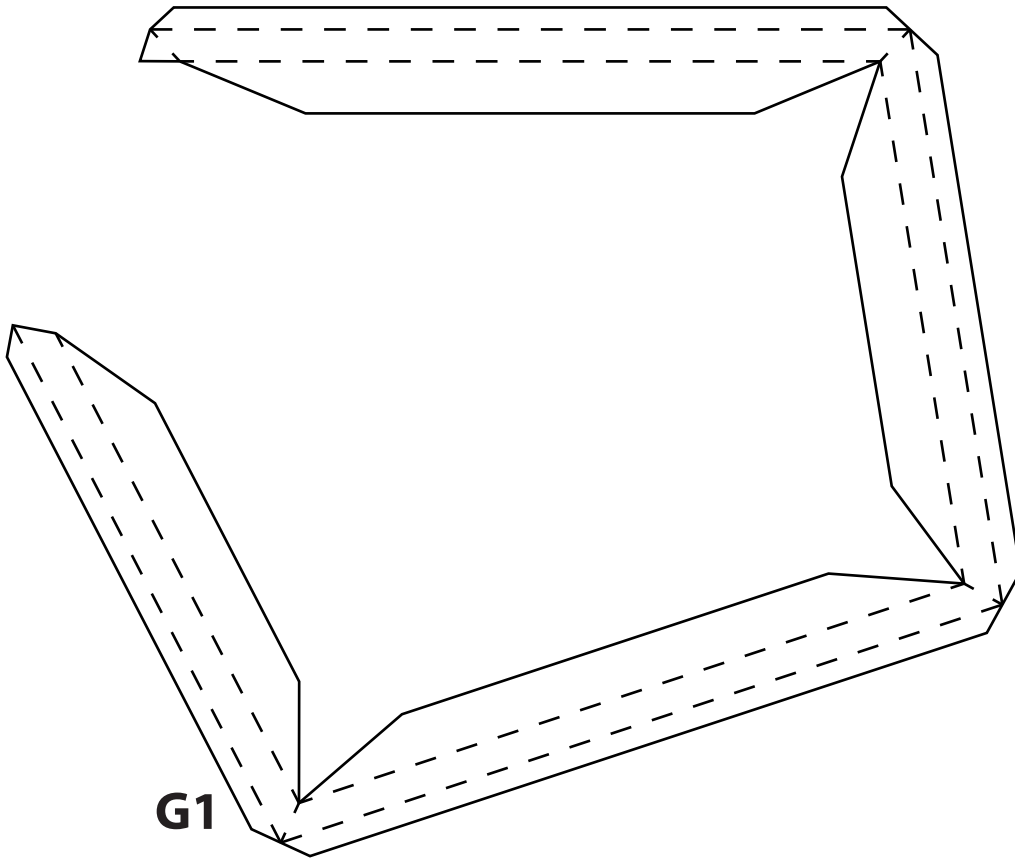
## F1 (facade columns)



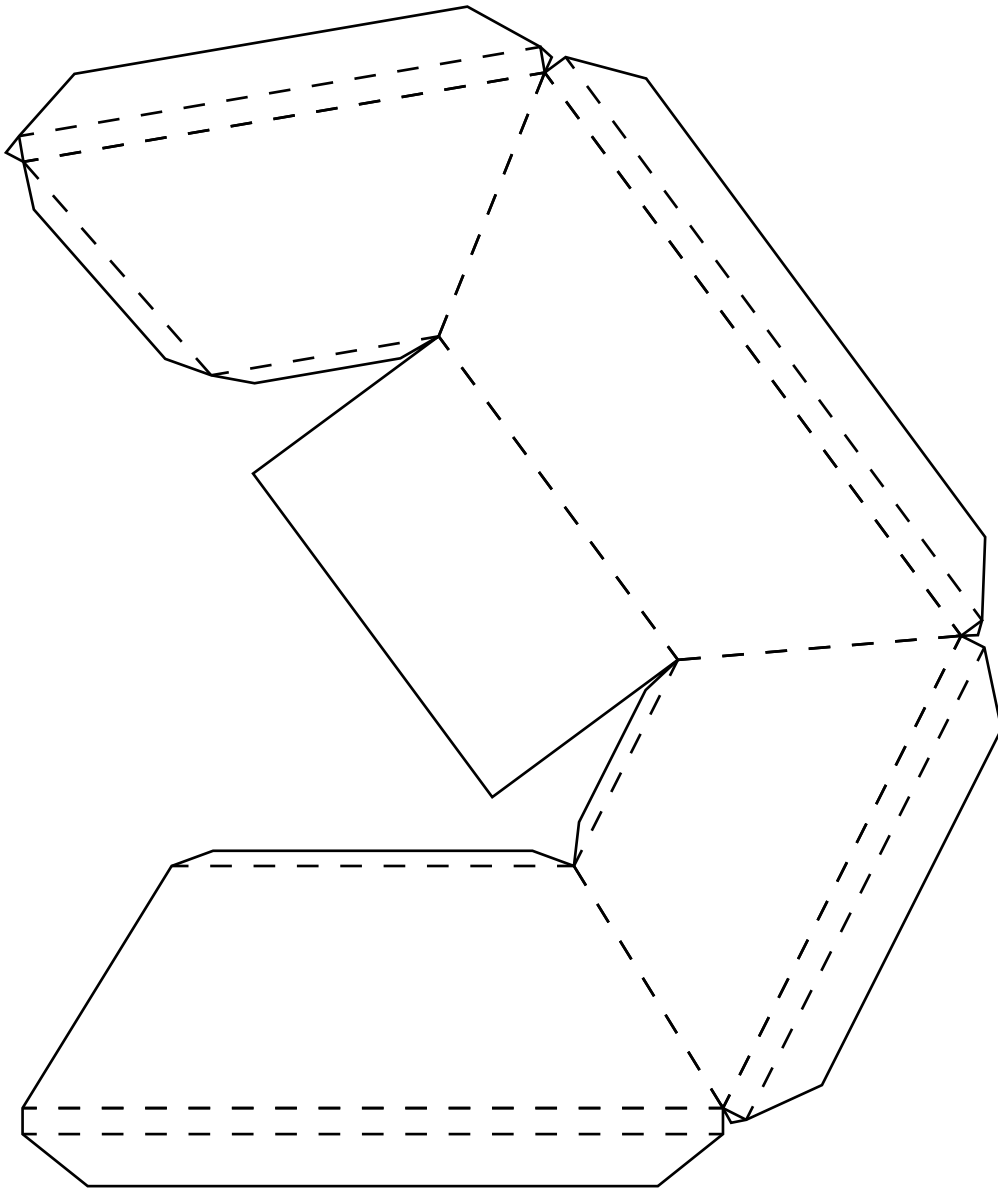
## I (windows)



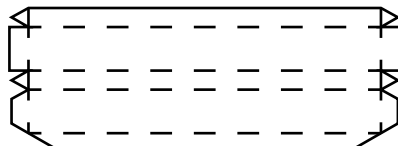
**G** (roof base)



**H** (roof)

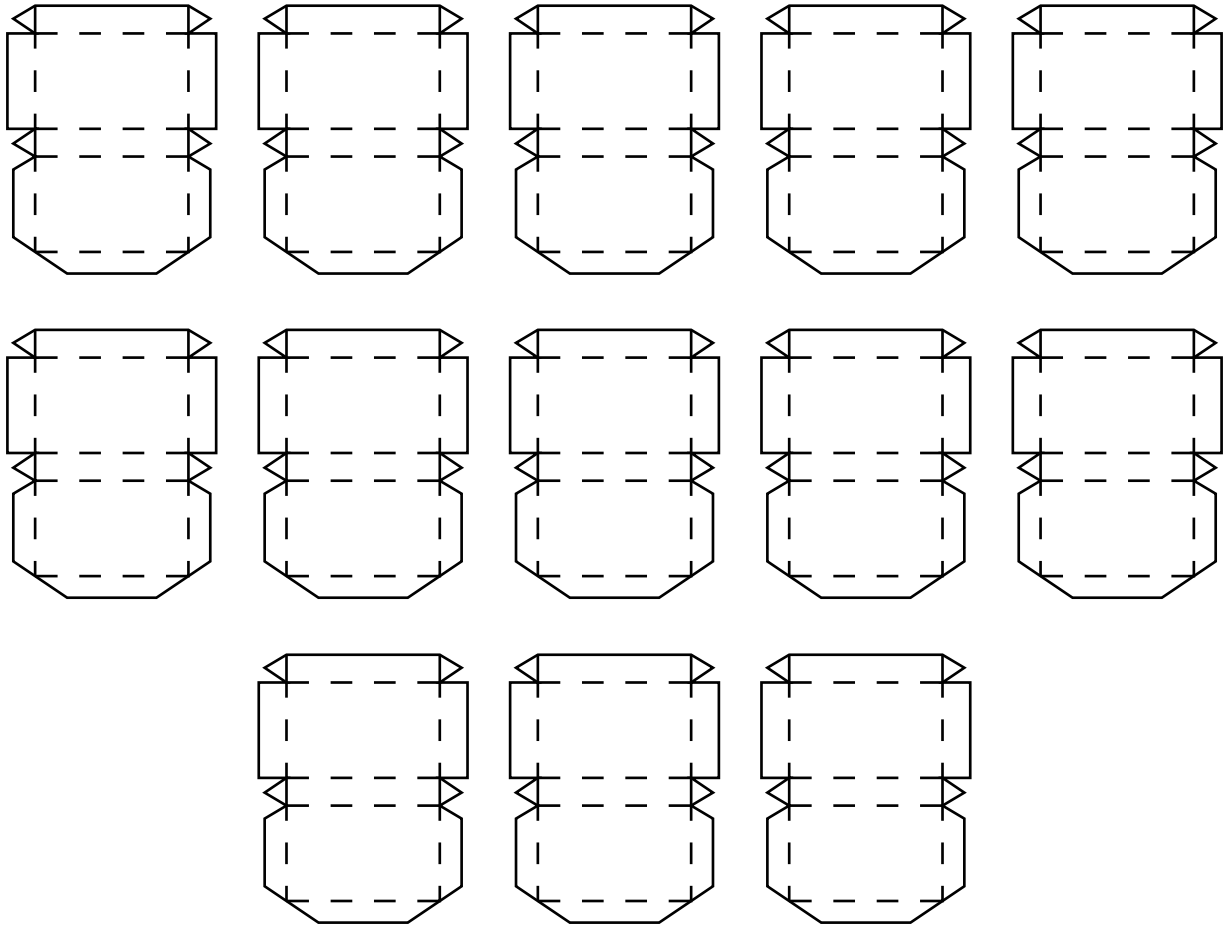


**F2** (facade element)



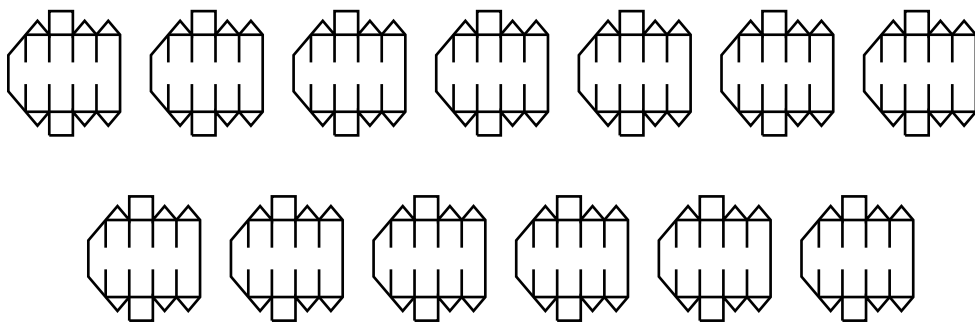


## B2 (backside columns)



---

## C2 (frontside columns)





**ARCHITECTURE**

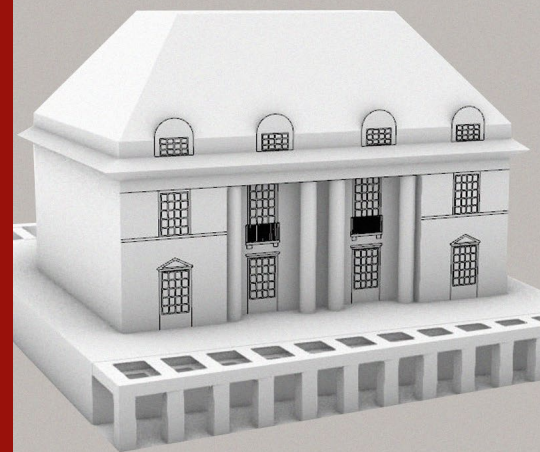
*with sauce* 

This tinker set has been provided by ARCHITECTURE with sauce, a project dedicated to offer crafting models.

Be sure to upload your building to the official gallery after you decorated it with colors or glitter: [www.craftingmodels.com/upload/](http://www.craftingmodels.com/upload/)

You can share your artwork on social media using the tags #craftingmodel #frankfurt #architecture and #dam.

Hungry for building more? You can download additional crafting sets directly online at [www.craftingmodels.com](http://www.craftingmodels.com)



# German Architecture Museum

CRAFTING MODEL 1:250

difficulty: medium



The Gesellschaft der Freunde des Deutschen Architektur-museums e.V. (Friends of DAM) supports DAM in the realization of its public duties, both in ideal form and materially.